

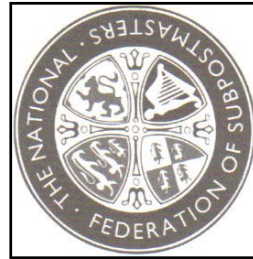


Winster Village Magazine

Distributed free to homes in Winster
40p for non-residents

February 2008

On the 16th February this year I will have been
'At the Helm' at Winster Post Office for 15 years.
Doesn't time fly.
I would just like to thank.....



Carolyn wants to thank us but we should be thanking her!

So good on you girl and thank you loads

The price of a First Class stamp for a standard letter weighing up to 100g will rise by 2p to 36p on 7 April 2008. A Second Class stamp for the same letter will rise by 3p from 24p to 27p.

Beat the increase by buying some beforehand. Self-adhesive stamps come in books of 12 or sheets of 100.

Caz Ludlam

WINSTER DIARY

Key to Venues:

*BI=Burton Institute, JR=Jubilee Room, CH=Church, MH=Market House, MS=Miners Standard, BG=Bowling Green, PO=Post Office PF=Playing Fields
SD =South Darley Village Hall, WMC=Winster Methodist Chapel
WR=Wensley Reading Room EVH=Elton Village Hall*

Sat	26	Jan		*	Keep Your Home Toasty Warm 10am to 2pm	BI
Fri	1	Feb		*	Winster Village Quiz 7.30pm	BI
Sat	2	Feb		*	WOW Event 7.30pm Wensley Music for Flute & Piano 7.30pm	WR CH
Tue	5	Feb		*	Winster Pancake Races 2pm Main Street	
Sun	10	Feb		*	Sing with us 5.000pm to 6.30pm	BI
Mon	18	Feb			MAGAZINE COPY DATE	
Mon	25	Feb		*	Winster History Group 7.30pm	BI
Fri	29	Feb		*	Winster Village Quiz 7.30pm	BI
Sat	7	Mar		*	Moby Duck 7pm	EVH
Sat	8	Mar		*	Winster Pre-School Nearly New Sale, Bakewell	

** Further info elsewhere in the Magazine*

This diary (with extra details of events in future months) also appears on the Winster Website at **www.winster.org**

To add an event to the diary, email the details to diary@winster.org or hand in a note to the Post Office.

Thank you to Tom, Geddes who provided the previous Market House logo and Jacque Salfield for the new Market House picture.

We list local businesses at £20 per year: send details to mag@winster.org, or drop a note via the Post Office or call 01629 650549

Also, individual adverts with graphics are £5 per month for a 1/5 page.
Many thanks

The Derbyshire Craft Fair is to be held on Sunday 24th February between 10:00 and 16:00 at the Whitworth Centre in Darley Dale. Entrance is free, there's ample parking, refreshments available and there is disabled access.

If you know of any local crafters who may be interested in a stall please feel free to contact me on my email address. If you want a bit more about the crafts, then also please contact me.

derbyshirecraftfairs@hotmail.co.uk

Website Design

- websites
- e-mail
- hosting
- domains
- e-shops



A professional website design and management service for local businesses of all sizes.

For more information call Mat or Niki on 01629 582666

www.WyeTecWebdesign.co.uk



A REMINDER!

WINSTER CALENDAR AND CHRISTMAS CARDS

Please keep taking photographs or looking through photos taken of the village over the past few years for the 2009 calendar.

?

Answer to Puzzle Page—see page 16

Answer: Odd one out. Holly.

Wanted

Violin Lessons
for complete
beginner
Tel 650522



SELECTA  TYRE LTD.

THE BEST PRICES IN TOWN

GUARANTEED!

We are a fully independent quality **Fast-Fit** company with twelve highly equipped autoservice centres and we promise to **BEAT** not meet, any local competitor's advertised price or substantiated quote, quality for quality, or brand for brand.

2 135 SR13 NEW STEEL RADIAL £30 inc vat	2 165/70 TR13 NEW STEEL RADIAL £35 inc vat	2 175/65 TR13 NEW STEEL RADIAL £40 inc vat	2 185/65 TR15 NEW STEEL RADIAL £45 inc vat
---	--	--	--

ALLOY WHEELS

4x15" alloy wheels fitted with high performance tyres (195/50 R15) including fitting, valves, wheel balancing and VAT

4 from **£299** were ~~£348~~



EXHAUSTS

CATALYTIC CONVERTERS STOCKED & FITTED

FULL & PART SYSTEMS TO FIT ALL MAKES & MODELS

Rear Boxes from only

£12.99

(Eg. Nissan Micra DN361)

MASSIVE SAVINGS



4x4 TYRES

FROM ONLY

£29.99
INC VAT

195 R15 (Eg. to fit Suzuki Vitara)



SELECTA TYRE LTD.



ALL MAJOR CREDIT & DEBIT CARDS ACCEPTED

OPEN: MONDAY - FRIDAY 8:30-6:00

SATURDAY 8:30-5:00 *SUNDAY 10.00-12.30

ALL ADVERTISED PRICES INCLUDE VAT. A SMALL CHARGE FOR TUBELESS VALVES & WHEEL BALANCING WILL BE MADE IF REQUIRED. IF YOUR SIZE OR MAKE IS NOT SHOWN HERE CALL NOW FOR YOUR UNBEATABLE SALE PRICE. HURRY, OFFERS ONLY AVAILABLE WHILST STOCK LASTS

MATLOCK ONLY

MATLOCK*
4 NEW STREET
FREEPHONE
0800 977 8174

BUXTON
FAIRFIELD ROAD
FREEPHONE
0800 977 8182

Visit us on our website - www.selectatyre.co.uk
WE NEVER CUT THE QUALITY • WE ONLY CUT THE PRICE

LOVE IS.

Love is in the essence of the night when dreams are made.

Love is at the start of every dawn when thoughts are said.

Love is in the outlook for that day

Love is in the spoken word and all I contemplate,

Love is where I'm at, and where I'm going

Love is in the secret and the showing

Love is

The ark of future freedom floats on an ocean of past
oppression.

The rivers of man's endeavours flow into the ocean of
his destiny.

First love

Love all men, but no man,

'Til he himself has proved

Beyond the newness and the passion

He is man enough to love.

Choose carefully little sparrow

The hawk is never far.

Ron Elliot.

Bring your voice and have a jolly good sing

We are singing a range of popular and light-hearted sing along songs
(it is informal and doesn't require sight singing skills!).

For more info call Sarah on 650958

Meet at the Jubilee Room on alternate Sundays 5.00 —6.30pm

**First rehearsal in the new year Feb-
ruary 10th then 24th**



ALSO we are planning a trip to the *Sing Along Sound of Music* on Sat-
urday 1st March. Tickets about £10. Call Sarah to book a place.

DIAMOND COURT DENTAL PRACTICE,

WATER STREET, BAKEWELL DE45 1EW

TEL. 01629 812991

Private & NHS Treatments * Full range of cosmetic treatments

*Oral Hygienist

Brightsmile and home tooth whitening * Child Friendly * Disabled Access

Pensions Credit—Are you missing out?

The Commission for Rural Communities have discovered that 42% of eligible pensioners in rural areas do not receive Pension Credit. Might you be one of those who is missing out?

Pension Credit is a tax-free payment for people aged 60 or over who live in Great Britain. You do not need to have paid National Insurance to get Pension Credit.

There are two parts to Pension Credit:

"Guarantee Credit" may be paid to people aged 60 or over and tops up your weekly income to a guaranteed minimum of £119.05 for a single person and £181.70 for couples. If you are eligible for this you do not have to pay council tax.

"Savings Credit" is an extra amount for people aged 65 or over who have saved some money towards their retirement, such as savings or a second pension. You can get Savings Credit on top of Guarantee Credit, and it can be worth up to £19.05 a week if you are single or up to £25.26 a week if you have a partner.

To find out whether you might qualify call any of the following:

Pensions Service on Freephone 0800 99 1234
[Derbyshire on 08456 058 058](tel:08456058058)
[Benefits Claims Advice ring 0845 120 2985](tel:08451202985)

Are You Caring For Someone?

Carers Allowance is a weekly benefit for someone caring for a person who needs regular substantial care or supervision. It is not necessary to be resident with them and you can also earn approximately £87 p w and still qualify.

The allowance is not means tested and can have a significant positive effect on other benefits. There are special rules if you are receiving a benefit such as State Retirement Pension.

If you're not sure about whether you qualify and wish to discuss it with me, please do not hesitate to give me a call.

Gillian Webber GP Surgery Outreach Work

0787 626231



**PLEASE NOTE THERE
ARE TWO QUIZZES IN
FEBRUARY, BOTH AT
7.30PM IN THE BUR-
TON INSTITUTE**

FRIDAY 1 FEBRUARY
Questions set and asked by
MARG & GEOFF LESTER
Proceeds to the Village Shop

FRIDAY 1 FEBRUARY
Questions set and asked by
MARG & GEOFF LESTER
Proceeds to the Village Shop

Admission £2

Raffle £1

**EVERYONE IS WELCOME – BRING
YOUR OWN DRINKS**

**DECEMBER'S quiz raised £161.50 for the
Winster Football Club**

Winster Local History Group

Monday 25 February 2008 at 7.30 in the Burton Institute, Winster.

'The Journey through Derbyshire of Celia Fiennes, 1697'. By Frank Parker (formerly of the BBC).

Frank introduces and shows the film he made of the journey on horseback of this remarkable woman from Chesterfield to Buxton. Using material from her private diaries, he brings to life the Derbyshire of the late seventeenth century and points out the things along the way that can help us interpret the past today.

Winster PTFA 100 Club

Firstly, I would like to thank everyone for their support. The funds helped towards trips, the hire of the Burton Institute and various events for the children at Winster School.

The draw will be exactly the same format, drawn monthly at the school by the children. There will be four cash prizes £25, £15, £5, £5 plus a twice yearly bonus draw of £50 each. The numbers will be published in the village magazine every month. The yearly subscription is £20.

You can get an envelope from the Post Office please place your subscription in the envelope, **write your name and address** on the envelope and send it back to the **post office or put it through the letterbox at The Old Bank House, Main Street**. This needs to be back before the February draw, I will notify you of your number. The subscription can be paid in two instalments £10, first one in January and the second in June.

Once again thank you for your support.

Kind regards

Jane Taylor-Usher

December draw results.

£25	Alun Thomas	£15	Sara Fairburn
£5	Gill & John Geddes	£ 5	Claire Harrison

£50 (Bonus number) Geoff Lester.

FREE TO A GOOD HOME

1 large wicker dog basket
Tel: 650530

1 Sky Digibox

In aid of St John the Baptist Church Winsters



Saturday 2nd February 7.30pm

Music for Flute & Piano
With Pippa Drummond and Peter Malcolm

Tickets £6.00 from Winsters Post office
Or
£7.00 at the door of the church
Including refreshments



WINSTERS PANCAKE RACES 2008

This year's races will take place along Main Street on Tuesday 5th February at 2:00 pm. There are races for all age groups from toddlers to OAPs so please come along and join in the fun.

In the event of bad weather, Carolyn at the Post Office (tel: 650034) will be advised if the races are to be cancelled. If you are new to the village please come along and have a look at one of Winsters's old traditions and feel free to take part!



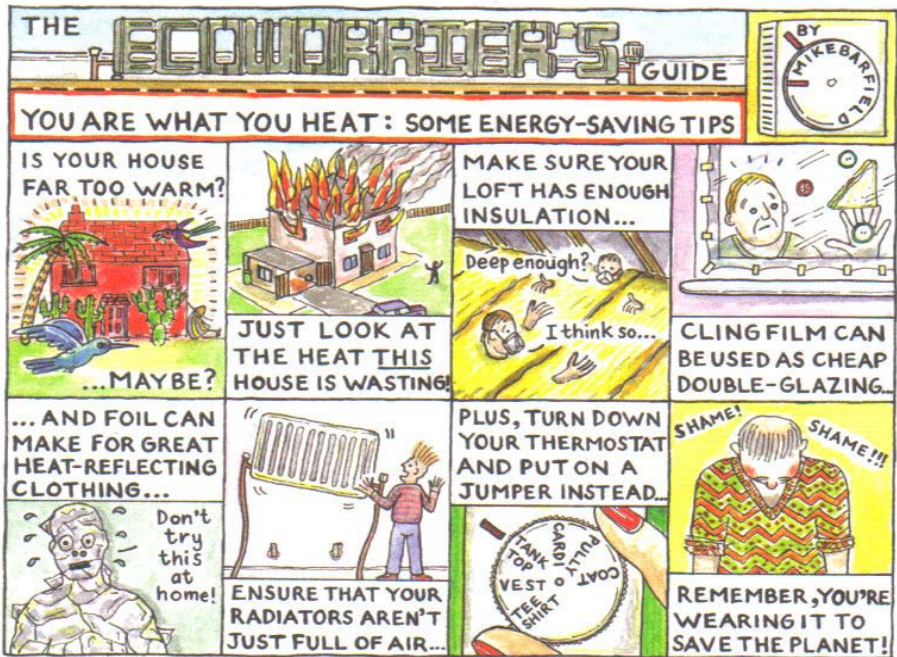
The mobile police station will be in Winsters between 11.45 and 12.45 on Thursday 24th & 31st January and 7th February. Please note the change.

Citizen Advice Bureau visits Winsters Surgery
Thursday 14 February And 2nd Thursday of every month

Free Advice on how to keep your home toasty warm

Burton Institute West Bank, Winstar

Saturday 26 January 10am to 2pm

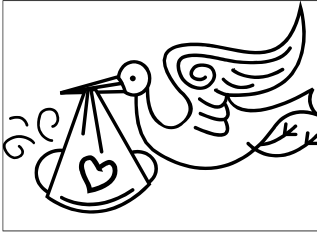


Practical advice on how to save “money” is on offer on Saturday 26 January. This event organised by Sustainable Winstar runs from 10am to 2pm and is to help local people cut down on their fuel bills.

UK Home Energy is mounting a display on insulation and local firm Derwent Carpets is illustrating the various types of underlay to cut down on heat loss. Ex-Winstar resident Jo Noble from All Sewn up is running a workshop on the variety of curtain linings to cut back on draughts and keep heat in and there will be also practical advice on draught proofing windows and letterboxes, how to make your own sausage dog and the use of cling film as a cheap secondary glazing.

Also on display will be a range of low energy lightbulb and information on grants. Electri-save meters (that show electricity consumption) are available for loan. Light refreshments will also be available.

(Thanks to Mike Barfield, BTCV and Every Action Counts for the graphics)



A warm welcome to Rory born in December and Liam and Bethany the new East Bankers born in January 2008

Winster Youth Club

Just a reminder there is currently £569.56 in the Youth Club account.

Failing the start of a new Youth Club in the village we propose that the remaining funds are donated to other organisations in the village which organise events for children of this age group. We would welcome any suggestions as to how the balance of the Youth Club funds should be distributed.

Please hand in any suggestions in writing to Carolyn at the Post Office by 28 February 2008.

Christine Wright Tel 650787

Clerk/Responsible Financial Officer—20 hrs per month Salary £15,470 pro rata which is £8.041 ph.

Winster Parish Council requires a Parish Clerk and Responsible financial Officer to provide professional support in all aspects of the Council's work. There are 12 evening meetings per year on the first Monday of every month except for Bank Holidays when it is the second Monday.

You will preferably have an understanding of local government regulations governing the conduct of parish council business and will advise and guide the members appropriately. You will also be the Responsible Financial Officer keeping accounts and records for the Council.

You will be computer literate, competent in all aspects of financial administration, expected to work flexible hours to include attendance at evening meetings and prepared to undertake appropriate training.

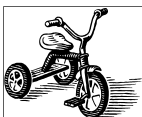
For job description and application form please contact Veronica Kemble on 650530, email: veronicawinster@aol.com. Closing date 5 pm on 4 February 2008

Winster Pre-School Nearly New Sale

Buy or Sell **quality** children's clothes,
toys, nursery equipment and maternity wear.

Saturday 8th March 10.30am—12.15pm

**The Friends Meeting House,
Bakewell**



Entry 50p



Refreshments also available

Volunteers required! All volunteers are
rewarded with a sneak preview.

For more information or to sell items, call
Claire 01629 650825
Oona 01629 650040



Registered charity number 1035604

Winners of the Pre-School Bonus Ball are:

15/12 Helena Percival £20

22/12 Kate Wellington £25

29/12 Maria Dronfield £20

5/1/08 Maria Dronfield £20!

12/1/08 Anthea Rawlence £25

MOBY DUCK presents THE KAM TREE

March 7th ,Elton Village Hall 7 pm

This is a show for children and their families and friends. It
lasts for one hour, and is suitable for ages 4-8.



Wanted Carnival Queen and her attendants for this year's Carnival. Wakes Day is Saturday 5 July, with the Crowning on Sunday 29th June

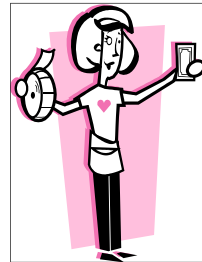
Please contact Irene Webster for more details on 650248.

Caz's Annual Raffle will be at Easter this year.

Do you have any yellow or Easter prizes for her.

Please drop them in at the Post Office.

Thanks



Hush, Hush. Dr Clark's leaving collection is to be found at the Post office., He retires in March. Thanks Anthea



THE BURTON INSTITUTE NEEDS A TEMPORARY CLEANER

to cover the next 5 to 6 months.

The work is for 2 hours each week and is mainly on Monday & Tuesday afternoons.

Pay rate is £7 per hour

Application, in writing, to –
Wendy Kirton, Ashlea, Woodhouse Lane, Winstar
For information/job description phone 650497

BURTON INSTITUTE TEA TOWELS & CROCKERY

Has anyone borrowed & not returned any of the above items?
Please return them to the hall as they are urgently needed

Green Corner—Jo Ferguson

Some thoughts on energy-saving tips for the fridge or freezer:

Never put hot, or even warm, food in the fridge: it will warm up the air inside, making the motor work harder to cool the air again.

Try not to stand your fridge or freezer next to the cooker, central heating boiler or a radiator, as again the poor motor will have to work twice as hard

Don't pack your fridge too tight: it needs room for cold air to circulate. But DO pack your freezer as full as you can: a full freezer uses less energy and is more efficient to run, because the frozen items help keep the temperature down.

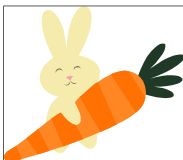
When defrosting food, defrost it in the fridge (OK, so you have to allow much longer for this to happen, but it cuts down energy costs because the defrosting process - yes, you've guessed it - keeps the fridge cool!) NB health & safety warning: always make sure your food is properly defrosted/piping hot when cooking from frozen.

Open the fridge or freezer door as briefly as possible to minimise warm air entering; and do make sure the seals are sound (check by trapping a piece of paper in the door. If the paper slips, the door seals need replacing)

And finally, when the time comes to replace your fridge or freezer, buy the most energy-efficient one you can afford. It'll save you money in the long run!

Now for a cheap and eco-friendly winter beauty tip....

For a rich and natural face pack for dry winter skin, mash 1 egg yolk, 2tsp almond oil and 1 ripe banana into a paste. Apply to your face and leave for 10 mins, then remove with cool water and pat dry. Enjoy!



WINSTER VILLAGE SHOP NEWS

Fruit and Veg orders placed on Wednesday/Thursday will be available for collection on Friday/Saturday with a 10% deduction.

MORE WINSTER VILLAGE SHOP NEWS

Good News!! The credit card and ‘phone card systems are up and running again!

Development.

The building work at the rear of the shop has been progressing slowly but steadily. The basic blockwork shell is now up and the roof is about to go on. If possible, we hope that the wall at the back of the shop can be removed before the start of the tourist season. That will increase the sales area. The lottery bid that we made last year was unsuccessful. We are awaiting the result of another grant bid, so it might be necessary to postpone completion of the building work and recommence when there are more funds available.

Management.

The Steering Group has decided to change the management structure of the Shop to allow a wider spectrum of people to be represented and involved in running the Shop. The Steering Group will be replaced by a volunteer, unpaid, “Board of Directors” which will be responsible for the business management of the shop.

A new group is to be formed, which will have more involvement with the day-to-day running of the shop. This group will involve one or more directors and the shop manager in co-operation with others in the village. All members of the group will be expected to play an active role in the running of the shop and become familiar with problems and procedures that are involved! It is intended to be a forum for those who wish to be constructively involved in the routine running of the shop.

Anyone who would like to be involved in the new group should leave their details in writing at the shop or ‘phone John Mills on 650549.

Fundraising.

As stated above, there is a need for additional funds to complete the shop re-development. We need a new and revitalised shop to offset the “Sainsbury Factor”. The local fundraising process should really have begun at this time last year, but for a variety of reasons it did not get off the ground. Hopefully, we will get it into gear very soon. If you are interested in getting involved, ‘phone John Mills on 650549.

GARDENING NOTES—EB

Old age in a garden is not satisfactory unless remedial work is carried out. Clumps grow too big and crowd out more unusual plants, and after a while the general design is lost. I like to put a groundsheet down and dig up the clumps and divide and pot on. Well rotted manure and compost need to be dug in to prepare the ground.

January brings the snow, makes our feet and fingers glow.

The Daffodils.

The Daffodils return in Spring.
With emerald leaf and golden head
My own small patch of sunshine grows
In an otherwise chill, damp garden bed.
They drift and float in a gentle breeze,
My spirits rise at the splendid scene
Of the golden wave of the Daffodils
And suddenly my world's serene.
Material things don't worry me
I need no pill to cure my ills,
All I want is peace, and time,
To gaze at my golden Daffodils.

There are five Spring flowers hidden in the following jumble of letters...plus one which doesn't belong. Can you spot the odd one out?

TACSPHURNROBOOMRCWIL
UEDRLTROLUOSIISPYEAP

Do take care. More next month. Joyce.

Please turn to page 3 for the answer

All the members of the Darby & Joan Club would like to wish everyone a very Happy New Year.

We would like to thank everyone for their generous donations throughout the year. With special thanks to David & Marilyn and the Staff at The Bowling Green for a wonderful Christmas Dinner. Many thanks also to the Heathcote Charity, Carnival Committee, Secret Gardens and Bowling Green Quiz and supporters of the Whist Drives.

Without all their very generous support and good will we would not be able to enjoy all our outings.

Sandra

Church Services—John Marshall

Every Sunday Parish Communion at 9.30am

Winster Methodist Church

10 February 2.30pm Carol Service Rev Steven Bennett

24 February 2.30pm Rev Alan Dawson

I am moving, temporarily I hope, to Darley Dale,
where my address will be:

21, Nether Way,
The Parkway,
Darley Dale, Matlock, DE4 2TS. Tel.
01629 734547



I am keen to return to Winster and whilst I do have plans in that direction, should you or anyone hear of a suitable house to rent, I would be very pleased to hear from them.

The owners of The Old Bakehouse, Alan and Leslie Evers are returning to Winster from Washington USA, during February.

More Train Information—John Geddes

Buying train tickets online is very convenient, but the most popular website, "trainline.com" has started getting very greedy. They add a £2.50 fee for paying by Credit (rather than Debit) card, they sell you insurance unless you remember to un-select it, and now they are adding an extra charge for having your tickets posted to you, or even for picking them up at a station.

You can buy exactly the same tickets (for any train company) without any extra charges if you use the www.EastMidlandsTrains.co.uk website instead.

(www.megatrain.co.uk site brilliant for off peak travel—thanks, Anthea)

Winster Business Directory

<i>Miner's Standard</i>		650279
Real Ale Home cooked Meals	Top of the Bank, Winster	
<i>Tulips Florist</i>		815816
Flowers for all occasions		
<i>Driving Lessons</i>	<i>01629 650175 or</i>	07879
First lesson free	Friendly Female Driving Instructor	268738
<i>Matlock Glass Co Ltd</i>		582043
Replacement windows & doors, double glazing. Safety glass		
<i>Thomas Greatorex & Sons Funeral Directors</i>		582470
Established in since 1892 The Green Matlock		
<i>Dryad Tree Services</i>		650145
Tree Services & Woodland management		
<i>Salisbury & Wood</i>		582272
Builders Merchants Old Coach Road, Tansley		
<i>Bowling Green Inn</i>		650219
Good home cooking. East Bank, Winster		
<i>L & JM Webster Milk Retailers</i>		584797
Delivering your milk, local produce and other products		
<i>Peak Cottage Plants</i> christinelewzey@btinternet.com		650428
Hardy perennial plants, design & planting service		
<i>Peak Insurance Services Ltd—24 Bakewell Road, Matlock</i>		582911
Personal Service for all Business and Home Insurance		
<i>M. Markovitz Ltd— Builders & Plumbers merchants</i>		753773
Station Road, Darley Dale DE4 2EQ		
<i>DJG's Motors Taxi Service Birchover</i>	<i>650025 or</i>	077672
4 + 8 seater Local & Long Distance, Airport etc.		38331

Winster Business Directory

<i>All Sewn Up</i> Curtains, blinds, loose covers, alterations—call J. Noble	582421
<i>Peak Stonescapes</i> Drystone walling, stonework and landscaping	650418
<i>R Stone Joinery</i> Main Street, Elton. All types of Joinery Work undertaken	079718 15683
<i>Leacroft Garage and Car Sales</i> All mechanical and body repairs to any make, MOT	650253
<i>Steve Salfeld</i> <i>steve@stevesalfeld.com</i> Jazzsax—Jazz Blues, Rock'n'Roll bands for all occasions	650183
<i>Peak Oil</i> Domestic Heating Oil	01246 450242
<i>Designate Products</i> <i>www.designateproducts.co.uk</i> Handmade Creative Interior Accessories	079748 19235
<i>David Barnsley</i> Painter & Decorator (Interior & Exterior)	650588
<i>Local Driving Instructor ask for Tony</i> First 2 lessons £5.99 each (07814899967)	650503
<i>Frank Mason Portable Appliance Testing</i> Holiday lets, small businesses, churches & halls	650738
<i>You could advertise here for £20 a month Tel John Mills 650549</i>	

WINSTER DIRECTORY

Village Mag	Anthea Rawlence	mag@winster.org	650480
Burton Institute: Chair	Frank Mason	frankthewitch@yahoo.co.uk	650738
Burton Institute: Bookings Wheelchair (also Secret Gardens, Christmas Tree)	Gill Geddes	gill@winster.org	650364
Burton Institute: Photocopier/Computer	John Geddes	john@winster.org	650364
Playing Fields/Tennis Court	Gerry Harpham		650412
Pre-School ("Playgroup")	Cathy Banks	07799	08244
Toddler Group	Irene Webster		650248
Darby & Joan	Sandra Purslow		650222
School: Clerk	Veronica Kemble	info@winster.derbyshire.sch.uk	650238
Village Shop: Manager	Steve Flitter	shop@winster.org	650683
Post Office:	Carolyn Ludlam		650034
Winster Surgery	Leacroft		650207
Carnival: Chair	Mike Hatfield	carnival@winster.org	650468
Parish Council: Clerk	Veronica Kemble	parishclerk@winster.org	650530
Parish Council: Chair, Neighbourhood Watch	Brian Long	parishchair@winster.org	650780
Entertainments Group History Group	Geoff Lester		650090
Tapestry Group Viewings	Wendy Kirton		650497
Member of Parliament	Patrick McLoughlin	02072	193511
District Councillor	John Moseley		650760
Churchwardens	Roland Corfield Roy Witham		734480 650329
Curate	John Marshall		650310

Any changes or additions? Tel. 650480 or mag@winster.org. thanks