



Winster Village Magazine

Distributed free to homes in Winster
40p for non-residents

May 2008

A New Look for YOUR Village Shop

We are seeking positive ideas and feedback

This is YOUR chance to have YOUR say, share
YOUR views and discuss ideas

**Monday May 12th 7:30 in the Burton Institute
Communicating with the Community**

The aim is to have an open discussion and to gather ideas
to devise an action plan of how the shop will look and
feel in the future

Please come and represent the village, it's a real
opportunity for the community as a whole to share
suggestions, build on the information gathered through
the questionnaire and work together to develop a plan
for us all to understand the evening is open to anyone
older than 10!

Please contact John Mills on 650549, Oona Gilbertson on 650040
or sign up in the shop if you intend to come
we'd like an idea of numbers

Thank you

WINSTER DIARY

Key to Venues:

*BI=Burton Institute, JR=Jubilee Room, CH=Church, MH=Market House, MS=Miners Standard, BG=Bowling Green, PO=Post Office PF=Playing Fields
SD =South Darley Village Hall, WMC=Winster Methodist Chapel
WR=Wensley Reading Room EVH=Elton Village Hall*

Sat	26	Apr	*	Barron Brady 7.30pm	BI
Sun	27	Apr	*	Winster PTFA Plant Sale 1—2pm	
Mon	28	Apr	*	Winster History Group 7.30	BI
Tue	6	May	*	Whist Drive 7.30pm	JR
Fri	9	May	*	The Crucible by Arthur Miller 7.30pm	BI
Sat	10	May	*	Winster Football Club Inaugural Dinner	MS
Sun	11	May	*	Winster Choir Practice 5pm—6.30pm	BI
Mon	12	May	*	New Look Village Shop Meeting 7.30pm Winster Parish Council Meeting 7.30pm	BI JR
Thur	15	May	*	Fashion Show 7.30pm	BI
Sun	18	May	*	MAGAZINE COPY DATE Helen's Trust Fun Run Chatsworth	
Wed	21	May	*	Winster Parish Annual Meeting 7.30pm	BI
Sat	7	Jun	*	Wyns Tor Singers & Ben Gregor-Smith 7.30pm	Ch
SAT	5	Jul		WINSTER CARNIVAL DAY	

** Further info elsewhere in the Magazine*

This diary (with extra details of events in future months) also appears on the Winster Website at www.winster.org

To add an event to the diary, email the details to diary@winster.org or hand in a note to the Post Office.

Anything information wrong? Let me know on mag@winster.org.
Tel 650480 or leave a note at the Post office.

?

Answers to Puzzle Page—see page 21

Answers: Doris. May. Victor. Clive. Vera. Ruby. Leon. Pauline.

PTFA 100 Club Results

Will be in next month. If you wish to join please contact Jane Usher via Winsters PO

Website Design

- **websites**
- **e-mail**
- **hosting**
- **domains**
- **e-shops**



A professional website design and management service for local businesses of all sizes.

For more information call Mat or Niki on 01629 582666

www.WyeTecWebdesign.co.uk

The mobile police station will be in The mobile police unit will be in Winsters EVERY WEEK on a Thursday between 9.00 and 10.00 AM.

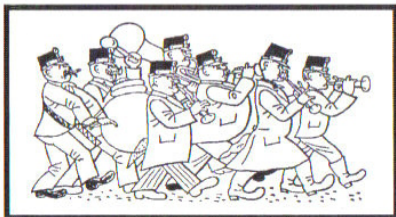
Citizen Advice Bureau visits Winsters Surgery 2nd Thursday of every month

Free to a good home

1. Sanyo music centre (tape, CD, radio plus 2 speakers that attach to the sides)
 2. various PC bits and bobs - 'wingman' joy stick, keyboard and mouse, data switch, 2 PC speakers, spare cables
- Mark and Oona Gilbertson (650040)

Wanted

I am looking for a stone to go in front of my fireplace grey or grey/pink in colour. Dimensions 119cm long, 10cm high and 25-30cm width. Please contact Carolin, Olive's Cottage, West Bank, 07888850242, if you have one for sale.



**WINSTER
WAKES
CARNIVAL
2008**

WAKES DAY SATURDAY 5 JULY 2008

WE WELCOME YOU TO RUN A STALL AT
OUR VERY SUCCESSFUL AND ENJOYABLE
CARNIVAL.

Fill in this form and send to Mandy Marsden,
(650181), 18, Leacroft Road by 1 June

STALLHOLDER BOOKING FORM

Name:

Address:

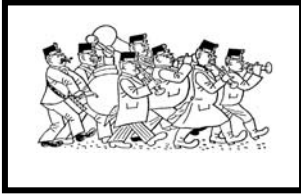
Phone number:

E-mail address:

Stall fee (£5 per table for locals)

Please provide your own table

Stall type and special requirements if any



WINSTER WAKES

CARNIVAL 2008

The Committee has started organising the Carnival in earnest and it looks as though it is going to be better than ever – we just need good weather!

We also need raffle **prizes** for a Carnival raffle. If you could please donate a **prize**, that would be great. We are collecting the **prizes** NOW, at

Mandy Marsden, 18, Leacroft Road. 650181 or

Chris Wright, The Homestead, East Bank. 650787

The prizes will be on display in the Post Office window

THANK YOU, THANK YOU, THANK YOU

We list local businesses at £20 per year: send details to mag@winster.org, or drop a note via the Post Office or call 01629 650549

Also, individual adverts with graphics are £5 per month for a 1/5 page.

**DIAMOND COURT DENTAL PRACTICE,
WATER STREET, BAKEWELL DE45 1EW
TEL. 01629 812991**

Private & NHS Treatments * Full range of cosmetic treatments

*Oral Hygienist

Brightsmile and home tooth whitening

Child Friendly * Disabled Access

SELECTA  TYRE LTD.

THE BEST PRICES IN TOWN

GUARANTEED!

We are a fully independent quality **Fast-Fit** company with twelve highly equipped autoservice centres and we promise to **BEAT** not meet, any local competitor's advertised price or substantiated quote, quality for quality, or brand for brand.

2 135 SR13 NEW STEEL RADIAL £30 inc vat	2 165/70 TR13 NEW STEEL RADIAL £35 inc vat	2 175/65 TR13 NEW STEEL RADIAL £40 inc vat	2 185/65 TR15 NEW STEEL RADIAL £45 inc vat
---	--	--	--

ALLOY WHEELS

4x15" alloy wheels fitted with high performance tyres (195/50 R15) including fitting, valves, wheel balancing and VAT

4 from **£299** were ~~£348~~



EXHAUSTS

CATALYTIC CONVERTERS STOCKED & FITTED

FULL & PART SYSTEMS TO FIT ALL MAKES & MODELS

Rear Boxes from only

£12.99

(Eg. Nissan Micra DN361)

MASSIVE SAVINGS



4x4 TYRES

FROM ONLY

£29.99

INC VAT

195 R15 (Eg. to fit Suzuki Vitara)



SELECTA TYRE LTD.



ALL MAJOR CREDIT & DEBIT CARDS ACCEPTED

OPEN: MONDAY - FRIDAY 8:30-6:00

SATURDAY 8:30-5:00 *SUNDAY 10.00-12.30

ALL ADVERTISED PRICES INCLUDE VAT. A SMALL CHARGE FOR TUBELESS VALVES & WHEEL BALANCING WILL BE MADE IF REQUIRED. IF YOUR SIZE OR MAKE IS NOT SHOWN HERE CALL NOW FOR YOUR UNBEATABLE SALE PRICE. HURRY, OFFERS ONLY AVAILABLE WHILST STOCK LASTS

MATLOCK ONLY

MATLOCK*
4 NEW STREET
FREEPHONE
0800 977 8174

BUXTON
FAIRFIELD ROAD
FREEPHONE
0800 977 8182

Visit us on our website - www.selectatyre.co.uk
WE NEVER CUT THE QUALITY • WE ONLY CUT THE PRICE

Campervan For Sale

Mercedes Vito 2.3 litres Campervan with factory fitted Westfalia fitting.
2 + 2 berth, gas cooker, sink, running water, pop top, Mot Jan 09, Tax Aug 08,
just been serviced, excellent condition, 87,000miles LHD, £16,500 ono.
Please contact Carolin on 07888850242 or email: k2levi@yahoo.co.uk, Olive's
Cottage, West Bank, Winster for further details and viewing.

THE WINSTER QUIZ SEASON 2007-8



Again a very good series of quizzes.
Thanks to all the people who set and asked
the questions and to all the people who
came and enjoyed themselves

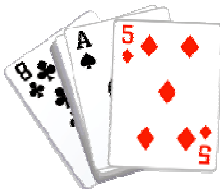
THE GROUPS THAT BENEFITTED

PRE-SCHOOL	£125
LUNCHEON CLUB	£117
CHRISTMAS TREE	£100
FOOTBALL CLUB	£161
VILLAGE SHOP	£110
HIGHFIELDS SCHOOL	£132
TWINNING	£100
GRAND TOTAL	£845

The new season begins on

Friday 26 September 2008

So put the date in your diary and come and help a
Winster group benefit as well as having a great evening.



The dates for the Whist Drive are
6th May and Carnival 30th June

Thank You Ellen & Sandra

Winsters Football Club's Inaugural Annual Dinner

Winsters Football Club is proud to announce we are holding our inaugural Annual Dinner at the Miners Arms on Saturday 10th May 2008.

For all of those who have very kindly helped and supported us in our collective efforts over the last year to re-establish the village Football Club, and would like to come to the Annual Dinner, tickets can be bought from Paul Armit (650817), Simon Percival (650115), Ian Simpson (650057), Andrew Harby (650664), or Jonathan Harper (650322).

We will be celebrating the success and progress we have made over the last year with re-establishing the club, and will be making awards for the "Winsters Player of the Year" and the "Most Improved Player". Tickets are £14 per person.

On Wednesday 16th April, on a pitch beautifully prepared for us by Winsters Playing Fields Committee, we beat for the first time this season Riddor 4 -1. Not only was this a milestone in turning around a string of defeats by them, it was also the best team performance of the season!

YOGA

There are still places left for yoga this Summer Term

The classes are at 6.30pm or 8pm starting on Tuesday April 22

And the cost is £35 for 10 weeks.

Cheques or cash to Marg Lester,

Orchard Mine Cottage, East Bank, tel 650090

It is a most enjoyable 1½ hours exercise and helps relax all the aching muscles, and it's in the village!

Winster History Group Geoff Lester

Monday 28 April 2008 at 7.30 in the Burton Institute, Winster.

How Winster Got Its Water. Illustrated talk on Winster's water supply, by Geoff Lester.

Monday 23 June 2008. Meet at 7.00 outside the Red Lion in Birchover. NOTE THE EARLIER START TIME.

Winster's Neighbours: Guided Walk round Birchover led by Irene Wright, Peak Park Ranger.

Irene will take us round the village, with a walk further afield for those who want it. We hope to go to see the reservoir above Birchover from which Winster's earliest piped water supply was drawn in 1871 (as explained in the talk on 28 April).

We are planning ahead for the Wakes service on June 29th



We are handing out music for the Wakes service on May 11th 5-6.30 in the Jubilee Room.

Do join us if you would like to sing in the village service

For more info call Sarah on 650958

Rehearsals are in the Jubilee Room on alternate Sundays 5.00 - 6.30pm

May 11th, June 8th and June 22nd



WINSTER CALENDAR AND CHRISTMAS CARDS

As Spring is here, the calendar group hope that people have been taking photos or looking through their collections.

As mentioned before, the calendar will feature photographs taken by local people and portray each month of the Winsters year, plus 2 photos suitable for Christmas Cards

If you have already got some photos ready please would you lend them to the group ready for the exhibition. The voting will take place in the Jubilee Room from Wednesday 16 July

Collections points for the photographs are

The Village Shop - Louisa Roper

4, Leacroft Road - Lynne Armitt

Orchard Mine Cottage, East Bank - Marg Lester

REMEMBER to write your name and telephone number on the back

If your photos are digital please e-mail them to

parmitt@btinternet.com - Lynne Armitt

john@winster.org - John Geddes

marg@orchardmine.co.uk - Marg Lester

OR keep them until JULY

Thank you

Christine Wright, Jane Bradbury, John Geddes,

Louisa Roper, Lynne Armitt, Marg Lester

Sorry about the bottom of the border.



Bargains Galore
A FUN EVENING



LADIES FASHION SHOW

Limited
Number
of
Tickets

and sale

In aid of Winster Pre-School

Licensed
Bar and
Raffle

at The Burton Institute, West Bank, Winster

Sizes 8 - 32 **Thurs 15th May 7:30pm** *Fashions for all ages*
Doors Open 7pm

Presented by SOS Clothing Company (CREDIT CARDS ACCEPTED)

Guest Models!!

M&S NEXT River Island
Dorothy Perkins Etam Wallis Gap
Pilot New Look Top Shop
Evans Jane Norman Principles

TICKETS **£4**
including
refreshment

Sharon 650718
Oona 650040
Post Office

Winster Pre-School is a Registered Charity 1035604

Winster Entertainments Group
presents
The Chatsworth Players

THE CRUCIBLE
by **Arthur Miller**

Friday 9 May at 7.30 in the Burton Institute

This touring production is in Winster for one night only. The professional Director, Sylvia Jackson, won several awards for her production of this play in the Crucible Theatre, Sheffield. Seating is limited to 50, and this is also an A-level text at Highfields, so **BOOK EARLY**.

Tickets £6 from Winster Post Office or 01629 650549.

Other dates for your diaries:

Wednesday 18 June at 7.30 pm in the Primitive Methodist Church
near The Flat

The Sheffield Folk Choral

After the concert there will be informal singing, and some refreshments, in the Bowling Green. Tickets (when printed) £5 from Winster Post Office. Advance reservations to Geoff Lester 01629 650090.

Wednesday 2 July at 8pm in the Burton Institute

The Jake Thackray Show

A Tribute to the Great Man with many of his Songs.

Tickets (when printed) £5 from Winster Post Office. Advance reservations to Geoff Lester 01629 650090. Numbers are limited for all these events, so don't just turn up and hope.



Carpet cleaning

Are you in need of your carpets rugs stairs
deep cleaned with a Kerby Hoover/shampoo
system for half the price of a professional?

If YES ring Alison for details

Tel 01629 650664

*Wyns Tor Singers
and
Ben Gregor–Smith
cello*

*Saturday 7th June 7.30 p.m.
Church of St. John the Baptist
Winster*

*Tickets £5.00 Winster Post Office
or
£6.00 at the door*

HOUSING BENEFIT FOR PRIVATE TENANTS

If you make a new claim for Housing Benefit after April 7 this year the local authority will calculate how much rent your Housing Benefit can cover by using the Local Housing Allowance rules. Instead of the actual rent you pay, they will use a standard Local Housing Allowance figure. This is the middle figure in the list of rents actually charged for properties in your area with the number of rooms the Housing Benefit rules say your household needs.

If your Housing Benefit entitlement is more than your actual rent, you can keep the extra, up to £15 per week.

If your Housing Benefit entitlement is less than your actual rent, you will have to make up the difference.

If you are thinking of moving into private rented accommodation you should ask the Housing Benefit office to tell you the Local Housing Allowance figure before you sign a Tenancy Agreement.

Gillian Webber
GP Surgery Advice Worker

Helen's Trust – Golden Gates 10k and Fun Run **Sunday 18th May 2008**

A fantastic new event in spectacular parkland. The 10k race is suitable for all levels of runners. Starting at Golden Gates, up to Dobbs Edge and around the two impressive lakes. Champion chip timing and run under UK athletic rules. Entrants must be over 15 years.

The Fun Run is open to all, mums, dad's grandparents and children. At 2.5km you can run, walk and skip it. Bakewell Travel has donated a £50 prize for the best fancy dress. Visit www.helenstrust.org.uk for other fantastic prizes.

The children may like to join the Sky Magic Kite workshop, come along and make your own kite and fly it or see the display of parachuting teddy bears. Bring your own bear or soft toy and have it dropped from a parachute.

Parking is free with entry only at the Golden Gates Baslow end and not through the main entrance. The 10k starts at 10.30 and the car park will need to close for the start of the race to allow the runners to pass, so please come early. The Fun Run will commence at 12 noon, so parking after 10.45 please.

Please enter if possible before 24th April so we can order your T-shirt and place your name into the draw to win a helicopter ride to and from the event.

Cant run won't walk! But would still like to help? Then come along and help us with marshalling, water stops, administration etc. Helens Trust is a local charity, manned by volunteers so the money goes to the people who need it.

Further information and entry forms from www.helenstrust.org.uk or Judy Williams on 01629 650580.

And fund-raising news

Claire at Winstar Medical Centre has successfully done her walk to Everest Base Camp and raised over £3,000 for the British Heart Foundation

Sue Brown Practice Nurse and Dr Grant ran the London Marathon for Helen's Trust and Cafod respectively. Claire hopes to run the London Marathon next year.

HAVE YOU ANY CHILDREN'S OUTGROWN SHOES?

I send clothing to a family in Ukraine where footwear is very expensive. Katie's is nearly four and growing fast. Her actual foot length is 16cm. I would like to buy her shoes that will fit her this autumn and winter. If you can help please phone Jean Skyrme on 650778

Cecil Sharp Celebrations David Mitchell

Winstler Morris with Cotton Grass Theatre are organising a centenary celebration of Cecil Sharp's visit to Winstler in June 1908. Cecil Sharp was the founder of the English Folk Dance Society, the first person to research, publish and promote folk dance, music and songs and a major figure in Edwardian England.

Our Celebration involves all three local schools who will learn about rural life in 1908 and participate in songs, games and dance from that time. In addition Babbling Vagabonds will be introducing puppetry and costume to the school children.

On Friday 13th June there will be an authentic re-enactment of Cecil Sharp's visit arriving by steam train and pony and trap, meeting with local lead miners and visiting local schools. In the evening there will be a pageant and entertainment organised by Cotton Grass Theatre involving the school children and hopefully their parents / carers and everyone in the village who wants to join us in a celebration of 1908. Over the weekend a number of other traditional Morris teams whose music and dances are also included in Cecil Sharp's publications will join us in the celebration.

Health ConXections

Presenting a range of Holistic Therapies to support the Mind & Body to regain Balance for Health & Wellbeing

Reflexology

Indian Head Massage

Seated Acupressure

Reiki

Crystal healing

Hypnotherapy

Complete confidentiality at all times

Contact: Sally Bromley

01629 650714

Burton Institute Management Committee

Charges for using the Burton Institute will be going up from 1st August 2008.

Our policy since the 1998 refurbishment has been to keep charges as low as possible, to encourage the maximum use of the Institute, and this has been very successful in building our usage by local groups.

For several years, we also hosted several IT classes for Derbyshire's Adult Education service, and this gave a valuable boost to our income, but as priorities have changed, so the number of classes have reduced, and this year we have none.

The resultant gap between our income and our costs is large, and growing. Energy costs have increased savagely, and each year seems to bring another set of rules that cost us money to obey.

This year, we expect to take in about £5,000 in user fees, but that will leave us about £3,500 short of meeting our basic running costs – and that is before we try to make any improvements.

We've been able to cope with these losses because of the funding we have received from Secret Gardens – an average of over £5,000 per year over the last five years. But it isn't responsible for us to count on that scale of contribution in future:

- As last year showed, Secret Gardens depends crucially on good weather.
- The Burton Institute now shares the Secret Gardens surplus with other village organisations.
- Whilst there is currently every sign that Secret Gardens will continue indefinitely, it would be foolish to count on that.

So the Burton Institute Management Committee have decided that we need to ask users to bear a considerably larger share of the running costs. Even at the increased rates, we will still need money from Secret Gardens (or other fundraising) to cover the shortfall on basic costs (and to fund improvements that will keep the Burton Institute up to date for our users' needs) - but the gap will be smaller.

This isn't a decision that we have taken lightly; we appreciate that this will be difficult for our user groups. But we do need to tackle the deficit, and even at the new rates, we will still be cheaper than virtually any other village hall in the area. The summary of the new rates is attached.

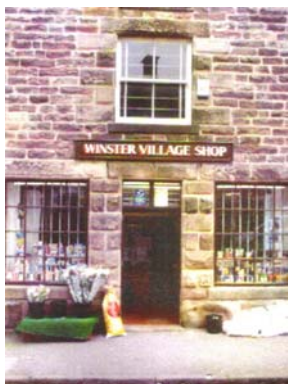
The new rates are as follows:

BURTON INSTITUTE, WINSTER

RENTAL CHARGES FROM 1st AUGUST 2008		MAIN HALL		JUBILEE ROOM	
		Local Rate	Others	Local Rate	Others
Community Groups (non-profit organisations - eg Pre-school, Toddlers, History Group)	Per session of up to 4 hours	£13.50	<i>£23.00</i>	£10.00	<i>£18.00</i>
	Twilight session- 5.30 to 7pm	£5.00	<i>£10.00</i>	£4.50	<i>£7.00</i>
Children's Parties (pre-teenage parties)	Per session of up to 4 hours	£23.00	<i>£33.00</i>	N/A	<i>N/A</i>
Other Private Functions (private parties, family reunions)	Per session of up to 4 hours	£70.00	<i>£90.00</i>	£22.50	<i>£36.00</i>
Professional/Government (commercial organisations & statutory bodies, eg Parish Council)	Per hour	£22.00	<i>N/A</i>	£17.50	<i>N/A</i>
Court Hire (up to 4 adults)	Per hour	£5.00	<i>£6.00</i>	£4.00	<i>£5.50</i>
Badminton – Main Hall Table Tennis – Jubilee Room					

Bookings to Gill & John Geddes 01629 650364 or institute@winster.org

Winster Village shop—Steve Flitter



Like most other retail businesses we are feeling the pinch at the moment, it may be the local supermarket effect, the national fear of spending or simply the novelty of a community village shop is not so appealing.

To try and lift spirits and enthusiasm we and our suppliers are working together on sales promotions so we can hopefully add to and increase our range at discount prices. However we

need the normal sales as well to remain economically and financially sound.

It is difficult as we do not have the storage capacity until the dreaded building programme is complete, We have now being informed the end of May is a possible completion date. So fingers, legs and anything else crossed please.

We all know the difficulties of parking in the village and I am sure you all realise how it can affect business with cars parking outside the shop. You can help by asking relatives, visitors and holiday makers in your cottages not to park in front of the shop at all times. We need access at night as well as in the day or daily papers may not be left.

I should also thank a band of volunteers who help in various ways such as David Mitchell and Sue Coates who are invaluable, Ellie and Jim. A special thanks to Veronica who is sadly unable to continue helping with the flood of Sunday newspapers and many more who shall remain nameless as I don't want to miss anyone out but my thanks anyway. Can you join our enthusiastic team and give a few hours every month - it means so much.

Winster Neighbourhood Watch Open Meeting

An early announcement of an Open Meeting to be held at the Burton Institute at 7.30pm on Wednesday 25 June, 2008.

An opportunity to meet local police officers and support staff centres on the new community policy strategy.

Further details in next month's mag

We all carry our mobile phones with names & numbers stored in its memory but which one is the contact person in case of an emergency? all you need to do is store the number of a contact person or persons who should be contacted during emergency under the name 'ICE' (In Case Of Emergency).

Gardening and Poultry Notes EB

I have been reorganising one of the herbaceous border. This time, to prevent weeds, I have used a bag of composted manure, incorporated to enrich the soil.

The seed potatoes, first earlies, have gone in. Remember to keep them watered **if** any dry weather comes along.

The National Gardens Scheme booklet for Nottinghamshire and Derbyshire is in circulation. On 1st June, and again on 5th October, there is to be a Premier Rare Plant Fair at Underwood (on the A608 ½ mile west of Junction 27 of the M1 tel: 01773 746071). There is a Nursery attached with lots of unusual plants for sale at very reasonable prices.

This is the month when many hens go broody. It is worthwhile to get a hutch ready which is secure from unwanted visitors – foxes, stoats, weasels and grey squirrels. Most hens like to come off the nest once a day to relieve themselves, drink, eat and have a dust bath.

I like to give the hens a shake of louse powder because, as the hen's temperature rises, she becomes more attractive to fleas.

I like to make a good nest so that the eggs do not get in a draught.

See the broody gets some nice titbits on her long three weeks of incubation.

Winster Parish Council Information

Pauline Dean

Annual Meeting

YOU ARE CORDIALY INVITED TO ATTEND THE ANNUAL MEETING OF THE PARISH OF WINSTER WITH WINSTER PARISH COUNCIL, TO BE HELD ON WEDNESDAY 21 MAY 2008 AT 7.30 PM IN THE BURTON INSTITUTE, WINSTER.

This is an open meeting for all residents of Winster, arranged and chaired by the Parish Council – it is not a Parish Council meeting.

Please let the Clerk (Pauline Dean) have any agenda items for this meeting by Tuesday, 8th May 2008. Contact her by e-mail (parishclerk@winster.org) by phone (01629 584818) or by letter (12 Amberdene, Matlock DE4 3HR).

Parish Council Meetings

All meetings of the Parish Council are open to the public, and the next meeting is on Monday 12 May, at the Burton Institute, commencing 7.30 pm. Why not come along and find out more about current issues in your local area. Minutes of meetings can be viewed on the Winster website

Bus Stops

You may have noticed that new 'No Waiting' signs have been put up where the bus stops, and it is now illegal to park in any bus stops marked with yellow lines at any time. The District Council are responsible for carrying out enforcement, which means that cars parked in the bus stops may get ticketed and face a fine.

Church Services—John Marshall

Every Sunday Parish Communion at 9.30am

Winster Methodist Church

11 May 2.30pm Rev A. Dawson

25 May 2.30pm Rev L. Houghton

Puzzle Page

Joyce Fletcher

Following are eight sentences, and hidden in each one is either a MALE or a FEMALE Christian name. Can you search them out?

Don't let aunty get too near the fire. Her new hairdo risks catching alight with all that lacquer on it.

Much to her dismay gran dropped her best china teapot on the floor.

Send her victorious, happy and glorious, so the anthem states.

The mouse in the attic lived there for a long time before it was caught.

Mum will be back soon she's just gone to deliver a parcel to next door.

Washing machines, my old great gran used to scoff. "If you don't rub your washing, you'll never get it clean."

Uncle picked up the salt pot, "I'll just sprinkle a little on."

The driver covered his truck with the tarpaulin eager to be off on his travels.

Do take care. More next month. Joyce.

Answers see page 3

Winster Business Directory

<i>Miner's Standard</i>			650279
Real Ale Home cooked Meals	Top of the Bank, Winster		
<i>Tulips Florist</i>			815816
Flowers for all occasions			
<i>Matlock Glass Co Ltd</i>			582043
Replacement windows & doors, double glazing. Safety glass			
<i>Thomas Grestorex & Sons Funeral Directors</i>			582470
Established in since 1892 The Green Matlock			
<i>Dryad Tree Services</i>			650145
Tree Services & Woodland management			
<i>Salisbury & Wood</i>			582272
Builders Merchants Old Coach Road, Tansley			
<i>Bowling Green Inn</i>			650219
Good home cooking. East Bank, Winster			
<i>L & JM Webster Milk Retailers</i>			584797
Delivering your milk, local produce and other products			
<i>Peak Cottage Plants</i> www.PeakCottagePlants.co.uk			650428
Hardy perennial plants, design & planting service			
<i>Peak Insurance Services Ltd—24 Bakewell Road, Matlock</i>			582911
Personal Service for all Business and Home Insurance			
<i>M. Markovitz Ltd— Builders & Plumbers merchants</i>			753773
Station Road, Darley Dale DE4 2EQ			
<i>DJG's Motors Taxi Service Birchover</i>	650025 or		077672
4 + 6 seater Local & Long Distance, Airport etc.			38331
<i>R.G. Morris & Son Ltd</i>	07968734909 or		01298
Fresh Fish, Poultry & Game delivered weekly Wed pm			72458

Winster Business Directory

<i>All Sewn Up</i> Curtains, blinds, loose covers, alterations—call J. Noble	582421
<i>Peak Stonescapes</i> Drystone walling, stonework and landscaping	650418
<i>R Stone Joinery</i> Main Street, Elton. All types of Joinery Work undertaken	079718 15683
<i>Leacroft Garage and Car Sales</i> All mechanical and body repairs to any make, MOT	650253
<i>Steve Salfield</i> <i>steve@stevesalfield.com</i> Jazzsax—Jazz Blues, Rock'n'Roll bands for all occasions	650183
<i>Peak Oil</i> Domestic Heating Oil	01246 450242
<i>Simon James Joinery</i> All types joinery undertaken & Bathroom suites fitted.	650115 077791 05470
<i>David Barnsley</i> Painter & Decorator (Interior & Exterior)	650588
<i>Local Driving Instructor ask for Tony</i> First 2 lessons £5.99 each (07814899967)	650503
<i>Frank Mason Portable Appliance Testing</i> Holiday lets, small businesses, churches & halls	650738
<i>You could advertise here for £20 a year Tel John Mills 650549</i>	

WINSTER DIRECTORY

Village Mag	Anthea Rawlence	mag@winster.org	650480
Burton Institute: Chair	Frank Mason	frankthewitch@yahoo.co.uk	650241
Burton Institute: Bookings Wheelchair (also Secret Gardens, Christmas Tree)	Gill Geddes	gill@winster.org	650364
Burton Institute: Photocopier/Computer	John Geddes	john@winster.org	650364
Playing Fields/Tennis Court	Gerry Harpham		650412
Pre-School ("Playgroup")	Cathy Banks	07799	084244
Toddler Group	Irene Webster		650248
Darby & Joan	Sandra Purslow		650222
School: Clerk	Veronica Kemble	info@winster.derbyshire.sch.uk	650238
Village Shop: Manager	Steve Flitter	shop@winster.org	650683
Post Office:	Carolyn Ludlam		650034
Winster Surgery	Leacroft		650207
Carnival: Chair	Mike Hatfield	carnival@winster.org	650468
Parish Council: Clerk	Pauline Dean	parishclerk@winster.org	584818
Parish Council: Chair, Neighbourhood Watch	Brian Long	parishchair@winster.org	650780
Entertainments Group History Group	Geoff Lester		650090
Tapestry Group Viewings	Wendy Kirton		650497
Member of Parliament	Patrick McLoughlin	02072	193511
District Councillor	John Moseley		650760
Churchwardens	Roland Corfield Roy Witham		734480 650329
Curate	John Marshall		650310

Any changes or additions? Tel. 650480 or mag@winster.org. thanks