



Winster Village Magazine

Distributed free to homes in Winster
40p for non-residents

April 2008

Shop and Post Office to Wed?

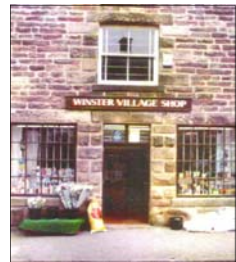
I am pleased to inform you that we have agreed terms to move the post office into the shop. This is subject to the final approval of the (national) Post Office which must await the outcome of the statutory consultation. Notices about this will appear in the post office shortly.

Your board of directors feel that combining the two will safeguard the post office in Winster for the foreseeable future, it will concentrate consumer interest in one building and the funding package agreed with Usher Retail will go a long way to bridging the gap in our finances for the shop re-development. Caz will continue as sub post mistress. We hope the move can take place during this summer, but this is dependent on final Post Office approval and completion of the necessary building works.

We do still need more funding and if anyone has any ideas for sponsorship, sources for loans, grants etc please give me or any of the board a ring.



Rod Shiers - Chairman



WINSTER DIARY

Key to Venues:

*BI=Burton Institute, JR=Jubilee Room, CH=Church, MH=Market House, MS=Miners Standard, BG=Bowling Green, PO=Post Office PF=Playing Fields
SD =South Darley Village Hall, WMC=Winster Methodist Chapel
WR=Wensley Reading Room EVH=Elton Village Hall*

Sun	22	Apr			Football Club Disco 8pm	BI
Sun	23	Mar		*	Village Choir sing Vicar of Dibley	CH
Wed	26	Mar			Twinning Meeting 8pm	BI
Fri	28	Mar		*	Winster Village Quiz 7.30pm	BI
Sat	29	Mar		*	Free Table Clear Out	MH
Tues	1	Apr		*	Winster Whist Drive 7.30pm	JR
Sat	12	Apr		*	Winster Skip	
Fri	18	Apr			MAGAZINE COPY DATE	
Sat	26	Apr		*	Barron Brady 7.30pm	BI
Sun	27	Apr		*	Winster PTFA Plant Sale 1—2pm	
Mon	28	Apr		*	Winster History Group 7.30	BI

** Further info elsewhere in the Magazine*

This diary (with extra details of events in future months) also appears on the Winster Website at www.winster.org

To add an event to the diary, email the details to diary@winster.org or hand in a note to the Post Office.

Errors in Luncheon Club letter

The last line should have read as, no doubt, with each of my colleagues....I went home a very contented individual.

My apologies

?

Answers to Puzzle Page—see page 17

Blue Suede Shoes.
Blue Velvet.
Lavenders Blue.
Blue Ridge Mountains.
Little Boy Blue.

**PTFA 100 Club
February Results**

£25	E Jackson
£15	S Talbot
£5	S Fairburn
£5	E Lunn

Website Design

- websites
- e-mail
- hosting
- domains
- e-shops



A professional website design and management service for local businesses of all sizes.

For more information call Mat or Niki on 01629 582666

www.WyeTecWebdesign.co.uk

The mobile police station will be in Winster EVERY WEEK on a Thursday between 9.00 and 10.00 AM.

Citizen Advice Bureau visits Winster Surgery
Thursday 8 April And 2nd Thursday of every month



FRIDAY 28 MARCH
Questions set and asked by
DON INGHAM

Proceeds to Winster Twinning

Admission £2

Raffle £1

EVERYONE IS WELCOME
BRING YOUR OWN DRINKS

SELECTA  TYRE LTD.

THE BEST PRICES IN TOWN

GUARANTEED!

We are a fully independent quality **Fast-Fit** company with twelve highly equipped autoservice centres and we promise to **BEAT** not meet, any local competitor's advertised price or substantiated quote, quality for quality, or brand for brand.

2 135 SR13 NEW STEEL RADIAL £30 inc vat	2 165/70 TR13 NEW STEEL RADIAL £35 inc vat	2 175/65 TR13 NEW STEEL RADIAL £40 inc vat	2 185/65 TR15 NEW STEEL RADIAL £45 inc vat
---	--	--	--

ALLOY WHEELS

4x15" alloy wheels fitted with high performance tyres (195/50 R15) including fitting, valves, wheel balancing and VAT

4 from **£299** were ~~£348~~



EXHAUSTS

CATALYTIC CONVERTERS STOCKED & FITTED

FULL & PART SYSTEMS TO FIT ALL MAKES & MODELS

Rear Boxes from only

£12.99

(Eg. Nissan Micra DN361)

MASSIVE SAVINGS



4x4 TYRES

FROM ONLY

£29.99

INC VAT

195 R15 (Eg. to fit Suzuki Vitara)



SELECTA TYRE LTD.



ALL MAJOR CREDIT & DEBIT CARDS ACCEPTED

OPEN: MONDAY - FRIDAY 8:30-6:00

SATURDAY 8:30-5:00 *SUNDAY 10.00-12.30

ALL ADVERTISED PRICES INCLUDE VAT. A SMALL CHARGE FOR TUBELESS VALVES & WHEEL BALANCING WILL BE MADE IF REQUIRED. IF YOUR SIZE OR MAKE IS NOT SHOWN HERE CALL NOW FOR YOUR UNBEATABLE SALE PRICE. HURRY, OFFERS ONLY AVAILABLE WHILST STOCK LASTS

MATLOCK ONLY

MATLOCK*
4 NEW STREET
FREEPHONE
0800 977 8174

BUXTON
FAIRFIELD ROAD
FREEPHONE
0800 977 8182

Visit us on our website - www.selectatyre.co.uk
WE NEVER CUT THE QUALITY • WE ONLY CUT THE PRICE

Road Traffic Act 1988

Restricted Byway

**It is an offence to
drive a mechanically
propelled vehicle
including motorcycle
on this route (except
for access to land)**



Footpath sign
stolen last
month.

Please keep your
eyes open and let
Winster Parish
Council know if
you see this or
any other signs
lying around.

Thanks

We list local businesses at £20 per year: send details to
mag@winster.org, or drop a note via the Post Office or call 01629 650549

Also, individual adverts with graphics are £5 per month for a 1/5 page.

**DIAMOND COURT DENTAL PRACTICE,
WATER STREET, BAKEWELL DE45 1EW
TEL. 01629 812991**

Private & NHS Treatments * Full range of cosmetic treatments
*Oral Hygienist
Brightsmile and home tooth whitening
Child Friendly * Disabled Access

Bargains Galore
A FUN EVENING
FASHION SHOW
and SALE

Sizes 8 - 32

Licensed Bar
And
Raffle

In aid of Winster Pre-School
at The Burton Institute, West Bank, Winster

Thurs 15th May 7.30pm

Presented by SOS Clothing Company (CREDIT CARDS ACCEPTED)

Guest Models!!

M&S NEXT River Island
Dorothy Perkins Etam Wallis Gap
Pilot New Look Top Shop
Evans Jane Norman Principles

TICKETS **£4**
including refreshment
Sharon 650718
or
Oona 650040

Winster Pre-School is a Registered Charity 1035604

Skip Next Date Saturday 12 April 2008

Leacroft Green 0745 to 0805
By Market House 0810 to 0835
East Bank at fork 0840 to 0905
Near Burton Institute 0910 to 0930

Luncheon Club

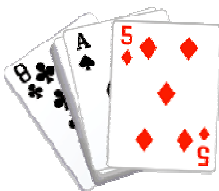
Roy Turcotte

The Luncheon Club was established in 1989 to provide senior residents of the villages with a weekly meal and entertainment.

Currently the Club has 11 members who meet weekly in the Jubilee Room of The Burton Institute. Transport to and from the Club is provided by Bakewell & Eyam Community Bus and members are assisted by a rota of 10 volunteers. Weekly dues of £2.50 cover the £1.40 cost of the meal, the rental of the Jubilee Room and, together with donations from our generous local charities, orange juice, tea & coffee, chocolates, costs of entertainment, and the occasional meal out.

We recently spent an anxious period after WRVS advised us that, from the end of March, meals would be charged at £4.70 per person, an amount beyond the means of some of our members'. However, Derbyshire County Council has now told us that it will increase its subsidy. We will be able to retain our existing dues. The incident has demonstrated that our Council Tax covers many useful services beyond fire and police protection. It also made us realize how much we would miss the Luncheon Club if it collapsed!

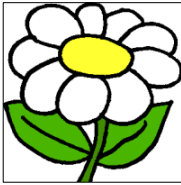
The Luncheon Club always welcomes new members and if you, or someone you know, might like to join us please call Tracey Mee at Underhall, telephone 532479.



The dates for the Whist Drive are 1st April, 6th May and Carnival 30th June

Thank You Ellen & Sandra

WINSTER SCHOOL PTFA PLANT SALE



Winster School PTFA committee are holding their second annual Bedding and Container Plant Sale. All plants ordered will be available for delivery or collection on Sun 27th April between 1pm and 2pm.

You should soon have an order form coming through your door and we aim to have pictures this year, displayed in a central location, to help you choose what you want.

This is a fantastic opportunity to buy high quality, good value plants without even leaving the village, so, please support your local school and place an order. Last year we raised £211 for the school - let's try for even better this year!

Winster History Group

Geoff Lester

Monday 28 April 2008 at 7.30 in the Burton Institute, Winster.

'How Winster Got Its Water Supply', an illustrated talk by Geoff Lester.

Drawing on photographs and other material in the History Group archive, this talk tells how things have changed from the time of well water and village pumps, through the years when Winster had its own private schemes, to the situation we have at present, with constant supplies of good water from the reservoirs in the Upper Derwent Valley.

If you remember stand pipes and taps that used to run dry, come along and share your memories. If you don't, then come along and see what it was like without the commodity we all take for granted - water.



YOGA

SUMMER TERM

Helen has agreed to run a Summer Term of yoga classes, as it is proving to be so successful.

START DATE Tuesday 22 April

CLASSES 10

TIME 6.30pm - 8.00pm

OR 8.00pm - 9.30pm

WHERE Burton Institute

FOR All ages, men and

women

COST £ 35 cash/ cheque

(payable to M. Lester)

TEACHER Helen Sutcliffe

Please bring a mat or travel rug.



O
N
T
H
E
T
H
I
R
D
S
A
T
U
R
D
A
Y
O
F
M
O
N
T
H

2008

15 MARCH

19 APRIL

17 MAY

21 JUNE

19 JULY

16 AUGUST

20 SEPTEMBER

18 OCTOBER

15 NOVEMBER

20 DECEMBER



Imperial Rooms, Imperial Road,
Matlock, Derbyshire, DE4 3NL
Telephone: 01629 57488
Email: townclerk@matlock.gov.uk
www.matlock.gov.uk

The mobile police station will be in The mobile police unit will be in Winsters EVERY WEEK on Thursday between 9.00 and 10.00 AM.

Citizen Advice Bureau visits Winsters Surgery
Thursday 8 April And 2nd Thursday of every month

For more info call Sarah on 650958

Meet at the Jubilee Room on

Sundays 5.00 - 6.30pm

March 30th, April 13th

and 20th May 11th



ALSO we are singing 'The Vicar of Dibley' on Sunday March 23rd

Dear Sir/madam,

My friend and I are members of Matlock U3A Local History Group. For the past few months we have been carrying out research into the above Canadian Army Unit. They moved to Rowsley, from Mansfield in the Autumn of 1918, where they built a camp. The men were nearly all lumberjacks who had been recruited specially to obtain timber for use in the trenches. They built two sawmills (one at Rowsley and one on Stanton Moor near the Cork Stone), a bridge over the Derwent at Rowsley and two light railways, again one at Rowsley and one on Stanton Moor. The one on Stanton Moor was horse drawn. The Unit returned to Canada in June, 1919. Some of the men remained behind, working for a private company that had been formed and continued to fell trees. A lot of the workforce were women. We don't yet know if they were members of the Women's Forestry Corps (A forerunner of the Land Army), or were locally recruited civilian women.

I would be very grateful if you could include the above in your village magazine with a view to us possibly obtaining further information from your residents, who may have knowledge from their own families about the events of that time. Any photographs, etc, would be brilliant.

My details are Jeff Sterland, 01629 581266, E-

Mail fiverounds.rapid@w3z.co.uk

Thanks for your help.

Mr. R.J.Sterland MBE

The earth does not belong to Man. Man belongs to the earth. All things are connected. Man did not weave the web of life, he is merely a strand in it. Whatever he does to the web, he does to himself."

On Earth, every day 2.5 babies are born for each person who dies.

World population is increasing by 1 million people every 4 days.

That's equivalent to an extra city the size of London each month

Or an extra Sheffield every 2 days.

Or an extra country the size of the UK every 9 months.

The Earth is not growing, but human population is - alarmingly!

We have nowhere else to go to. No new lands to discover.

The population of England alone (Not the UK) is increasing by a third of a million every year.

That is equivalent to an extra city the size of Derby every 8 months.

Or 10 extra villages the size of Winster every week

Or an extra 5 Youlgreaves every week.

England is not growing any bigger in size. But the population is - alarmingly!

Winster School

We're collecting vouchers!

We'd love to have your Sainsbury's and Tesco vouchers if you don't need them. You can bring them to school or leave them for us at the Post Office if that's easier for you (thanks Cas). If you're in the queue and the person in front doesn't want their vouchers, perhaps you could ask them to give you their vouchers - please don't ask the store staff as they're not allowed to give vouchers to other people.

Sports Relief

We all came to school in our sports kits on Friday 14 March in return for a donation to Sports Relief. We also bought lots of Sports Relief goodies including socks, water bottles and mini footballs. The Juniors held a **sponsored SILENCE** during **THREE** dinner breaks and the staff sponsored us. This was really hard, but we raised a lot of money for this good cause! The total collected so far is £147.42!



POULTRY NOTES

The hens are laying like mad. Be sure to have plenty of grit. I am letting mine out, under supervision because of the fox, and I would prefer them **not** to lay away. If they do, let them out later than usual and they will usually make a dive for their nest.

I have been scrubbing the ex-battery hens legs against mite, then applying Lyclear. We started with petroleum jelly but it is difficult to get the jelly under the scales.

E.B.

My apologies for not putting in the joke about the Norse wife. It was too long for the magazine. However shorter jokes and bits and pieces always welcome. Many thanks

Winster Parish Council Veronica Kemble

New Clerk

I will be leaving Winster Parish Council on 31 March and my replacement is Mrs Pauline Dean. Pauline's address is 12 Amberdene, Matlock DE4 3HR and her phone number is 01629 584818. Pauline will continue to use the email address parishclerk@winster.org.

Annual Meeting of the Parish of Winster

This open meeting is on Wednesday 21 May 2008 and more details will follow. The closing date for agenda items is 8 May. Please remember this is your meeting, so please do come along.

Do your gutters run onto the road?

Residents are reminded downpipes should not discharge onto the highway as this causes damage to the road surface and black ice.

Islington Lane change of status

Islington Lane is now classified as a **Restricted Byway** and is open to walkers, horse-riders, cyclists and horse-drawn vehicles only. This is a new category of Public Right of Way introduced by the Countryside and Rights of Way Act 2000.

If you see motor vehicles (cars or motorbikes) using this path, please report this to Derbyshire County Council on 08456 058 058, quoting the vehicle registration number if possible as well as the time and location.

Discounted rail travel is back on the cards for people in Derbyshire aged 60 or over or who have certain disabilities.

Derbyshire County Council and Derby City Council are funding the rail travel scheme as an added benefit for everyone in Derbyshire who is eligible for a new national bus travel pass.

The national scheme does not include cut-price train journeys. But the county council has worked with train operators to bring back half price train travel for people who are entitled to the card in Derbyshire.

Everyone in Derbyshire who gets a new travel pass will be entitled to half-price train journeys within the county and on some journeys to and from neighbouring counties.

Winster Wakes Open Golf Day

Tuesday 1st July, 2008

Venue : Buxton Cavendish Golf Club
1st tee time : 12.30pm
Format : 4 ball Stableford – full handicap; competition rules to be confirmed on day
Cost: £40 person (incl. round of 18 holes plus 2 course dinner)

Club rules relating to etiquette and dress code will apply .

If you are interested, please complete the form below and return to Alistair Wright (The Homestead, East Bank), or email winsterwrights@aol.com
A £10 deposit per person will be needed to be paid by 30th April.

REGISTRATION FORM

Name : _____

Handicap: _____

Tel. Number: _____

Email address: _____

Deposit (Due by 30th April): £ _____

Balance (Due by 1st June) £ _____

Free Tables at Market House Clear Out, Saturday 29 March

We are looking for volunteers on Saturday 29 March. If you or your organisation have items stored there, please put a clear label on anything you wish to keep, or send someone along. Unwanted tables will be labelled and left outside the Market House for anyone to take away. Those not taken will be dumped.

The tables vary in size and mostly have metal legs and veneered wooden tops. People who help will get first choice!

Mike Hatfield, Chair of Carnival Committee, 650468.

A Young Dynamic Folk Duo **Barron Brady**

With backing from our own WINSTER CHOIR

Sat. 26th April 7.30 B.I

Barron Brady are two folk singers with a fresh acoustic style and a broad range of appeal. They combine traditional British folk with self penned songs, with inspiration from Devon fishermen, sailors, orchard keepers, witches and farmers.

Tickets £6 from the Post Office
or Mary Mason 650738 or Phyllis 650241

Winster Village Shop

Steve Flitter

Promotions. Hope you found our first promotional programme helpful. We will now have monthly promotions with some really good savings on a wide range of goods. Until we get the new warehouse finished we wont be able to make full use of the promotions so apologies if some offers are only available briefly in the meantime.

Wild Carrot. We are now stocking a range of Wild Carrot products, an ethical co-operative who offer organic and Fair Trade goods. At the moment it is mostly nuts, cereals, muesli etc but if you like the range and want other items please let us know.

Orders. Do please take advantage of our pre-ordering facility particularly for fruit and veg and bakery. It helps us if we know in advance what you want particularly if you are planning a party or a dinner so we can increase our orders accordingly guarantee availability for you and hopefully not run out and disappoint other customers

Three Years. Believe it or not on Monday March 31st we will be beginning our fourth year of trading Winster Village Shop as a community owned business. Thank you all for your support and keep telling your friends about us.

Green Corner—Jo Ferguson

Make your own scourers with nylon mesh bags (the kind that oranges etc come in) stuffed inside each other and tied up.

Get rid of the dust on your houseplants and give them a refreshing drink by popping them in the garden during a light rain. For plants with thick leaves, try a discarded teabag or the inside of a banana skin to wipe the dust off and give them a shine.

Bored with the same old stuff going into kids goody bags? If you are organising a children's party, and want to avoid sending them home afterwards with goody bags full of plastic rubbish, here's some ideas for greener goodies. Home-made popcorn, biscuits with names iced on them, colouring pencils, seeds or bulbs with a small pot with compost. Pop them in plain brown or coloured recycled paper bags, which you could decorate or add a colourful name tag.

Employment - higher minimum wage and more holidays!

From 1 October 2007 the new amounts are :

National Minimum Wage

Aged 22+	£5.52 per hour
Aged 18-21	£4.60 per hour
Aged 16-17	£3.40 per hour

Paid Holiday - 4.8 weeks per year

That's 24 days per year if you work 5 days per week - this includes 8 Bank Holidays.

If you work less than 5 days per week the amount is pro rata.

Check your employment contract - it may give you better than this - but remember it can't give you less. You are entitled to receive holiday pay at a normal weekly rate but not including overtime or commission.

The Citizens Advice Bureau are able to advise on a large range of employment issues.

Gillian Webber
Rural Outreach Adviser

Useful Info John Geddes

Calling the 0870, 0845 and 0844 numbers used by many companies can be expensive - the calls cost more than normal calls, and are usually excluded from the "free calls" deals that are increasingly common.

If you resent this, there are a couple of ways around it. For those with Internet access, try www.saynoto0870.co.uk who have a lookup to normal "geographic" numbers for many companies. For some companies they also list 0800 numbers which will cost you nothing.

Alternatively, scour the company's literature or website for any phone numbers beginning "+44". 0870 numbers don't always work when called from abroad, so companies sometimes give a normal number for overseas callers. There is nothing to stop you calling such a number from the UK - just strip off the "+44" and replace it with a Zero.

If have (or can borrow) children aged 5-15, then train travel can be a lot cheaper with a Family Railcard.

With this railcard, up to four adults save about a third each (even off the cheapest advance fares) as long as they have at least one child with them. It doesn't have to be your own child (but parental consent is strongly advised!) - so you could take grandchildren, nieces or nephews.

The Daily Mail is running an offer that anybody can take up, without buying the paper - just register at www.family-railcard.co.uk/dailymail. That will get you a free railcard lasting until the end of June (so good for the Easter holidays) - and the option to renew for a further 12 months at £12 rather than the normal £24 if you want.

Using the railcard, and booking well ahead, you can get from Matlock to London and back for as little as £12 per adult and £4 per child. Matlock-Derby return (which doesn't require advance booking) comes down to £3 per adult and £1 per child.

Anthea's tip

Young person's rail card expires when you are 26. However you can re-new up to the day before your 26th birthday and use it for the following 12 months.

Church Services—John Marshall

Every Sunday Parish Communion at 9.30am

Winster Methodist Church

6 April 2.30pm Mr. P. Wadsworth

27 March 2.30pm Rev S. Bennett

Puzzle Page

Joyce Fletcher

Bluebells.

I saw a patch of Bluebells
Whilst walking through a wood.
I thought I'd like a bunch of these...
I wonder if I should?
The scent of them was heavenly,
Their shade like a Summer sea.
I put out my hand to pick some
As I knelt down on one knee.
I glanced up to see a farmer
Bearing down at speed,
With waving hands and stamping feet
There really was no need.
He shoutest in his loudest voice,
" 'Ow many yer collected?
Get yer thievin' 'ands off them
That species is protected."

To continue with the BLUE theme can you find the answers to the following songs with BLUE in the titles?

1.Blue S S. 2.Blue V. 3.L Blue. 4.Blue R M. 5.L B Blue.

Do take care. More next month. Joyce. (answers see page 3)

Winster Business Directory

<i>Miner's Standard</i>		650279
Real Ale Home cooked Meals	Top of the Bank, Winster	
<i>Tulips Florist</i>		815816
Flowers for all occasions		
<i>Matlock Glass Co Ltd</i>		582043
Replacement windows & doors, double glazing. Safety glass		
<i>Thomas Greateorex & Sons Funeral Directors</i>		582470
Established in since 1892 The Green Matlock		
<i>Dryad Tree Services</i>		650145
Tree Services & Woodland management		
<i>Salisbury & Wood</i>		582272
Builders Merchants Old Coach Road, Tansley		
<i>Bowling Green Inn</i>		650219
Good home cooking. East Bank, Winster		
<i>L & JM Webster Milk Retailers</i>		584797
Delivering your milk, local produce and other products		
<i>Peak Cottage Plants</i> christinelewzey@btinternet.com		650428
Hardy perennial plants, design & planting service		
<i>Peak Insurance Services Ltd—24 Bakewell Road, Matlock</i>		582911
Personal Service for all Business and Home Insurance		
<i>M. Markovitz Ltd— Builders & Plumbers merchants</i>		753773
Station Road, Darley Dale DE4 2EQ		
<i>DJG's Motors Taxi Service Birchover</i>	650025 or	077672
4 + 6 seater Local & Long Distance, Airport etc.		38331
<i>R.G. Morris & Son Ltd</i>	07968734909 or	01298
Fresh Fish, Poultry & Game delivered weekly Wed pm		72458

Winster Business Directory

<i>All Sewn Up</i> Curtains, blinds, loose covers, alterations—call J. Noble	582421
<i>Peak Stonescapes</i> Drystone walling, stonework and landscaping	650418
<i>R Stone Joinery</i> Main Street, Elton. All types of Joinery Work undertaken	079718 15683
<i>Leacroft Garage and Car Sales</i> All mechanical and body repairs to any make, MOT	650253
<i>Steve Salfield</i> <i>steve@stevesalfield.com</i> Jazzsax—Jazz Blues, Rock'n'Roll bands for all occasions	650183
<i>Peak Oil</i> Domestic Heating Oil	01246 450242
<i>Simon James Joinery</i> All types joinery undertaken & Bathroom suites fitted.	650115 077791 05470
<i>David Barnsley</i> Painter & Decorator (Interior & Exterior)	650588
<i>Local Driving Instructor ask for Tony</i> First 2 lessons £5.99 each (07814899967)	650503
<i>Frank Mason Portable Appliance Testing</i> Holiday lets, small businesses, churches & halls	650738
<i>You could advertise here for £20 a year Tel John Mills 650549</i>	

WINSTER DIRECTORY

Village Mag	Anthea Rawlence	mag@winster.org	650480
Burton Institute: Chair	Frank Mason	frankthewitch@yahoo.co.uk	650241
Burton Institute: Bookings Wheelchair (also Secret Gardens, Christmas Tree)	Gill Geddes	gill@winster.org	650364
Burton Institute: Photocopier/Computer	John Geddes	john@winster.org	650364
Playing Fields/Tennis Court	Gerry Harpham		650412
Pre-School ("Playgroup")	Cathy Banks	07799	084244
Toddler Group	Irene Webster		650248
Darby & Joan	Sandra Purslow		650222
School: Clerk	Veronica Kemble	info@winster.derbyshire.sch.uk	650238
Village Shop: Manager	Steve Flitter	shop@winster.org	650683
Post Office:	Carolyn Ludlam		650034
Winster Surgery	Leacroft		650207
Carnival: Chair	Mike Hatfield	carnival@winster.org	650468
Parish Council: Clerk	Pauline Dean	parishclerk@winster.org	584818
Parish Council: Chair, Neighbourhood Watch	Brian Long	parishchair@winster.org	650780
Entertainments Group History Group	Geoff Lester		650090
Tapestry Group Viewings	Wendy Kirton		650497
Member of Parliament	Patrick McLoughlin	02072	193511
District Councillor	John Moseley		650760
Churchwardens	Roland Corfield Roy Witham		734480 650329
Curate	John Marshall		650310

Any changes or additions? Tel. 650480 or mag@winster.org. thanks