



Distributed free to homes in Winster.
40p to non-residents

Items — to mag@winster.org
or to Winster Post Office
by 18th of the month.

Revised Copy Dates

November 11th

If you want to put in a Xmas message this costs £5.00 to include a graphic. Please leave copy and cheque made out to Winster Village Magazine at the Post Office.

Many thanks

December 11th

Last minute Xmas messages

January 18th

Back to normal

The magazine received a complaint about an article. I accept some element of the complaint and I apologise for not giving other councillors in the area to chance to comment on the views that were given in the Councillor's Newsletter.

In the meantime we reserve the to edit any contributions made, wherever they come from. Where possible we will inform the contributor beforehand.

In this case, a copy of this article has been sent to the District Councillor.

Anthea Rawlence

WINSTER DIARY

Key to Venues:

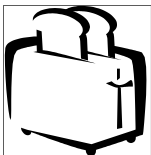
*BI=Burton Institute, JR=Jubilee Room, CH=Church, MH=Market House,
MS=Miners Standard, BG=Bowling Green, PO=Post Office PF=Playing Fields
SD= South Darley Village Hall, WMC=Winster Methodist Chapel*

Fri	26	Oct		*	Winster Village Quiz 7.30pm	BI
Thur	1	Nov		*	Winster Morris Men AGM 8pm	JR
Sat	3	Nov		*	Winster Football Club Rock Night	BI
Thurs	8	Nov		*	Toy Library comes to Winster	JR
Sun	11	Nov		*	<u>COPY DATE VILLAGE MAG</u>	
Wed	14	Nov		*	Twinning AGM 8pm	JR
Sun	25	Nov		*	Choral Evensong 6.00pm	CH
Mon	26	Nov		*	Winster History Group 7.30pm	BI
Fri	30	Nov		*	Winster Quiz 7.30pm	BI

** Further info elsewhere in the Magazine*

This diary (with extra details of events in future months) also appears on the Winster Website at www.winster.org

To add an event to the diary, email the details to diary@winster.org or hand in a note to the Post Office.



Frank Mason— Portable Appliance Testing
For holiday lets, small businesses,
churches and halls

Tel 01629 650738

Radio Derby Bus in Winsters

On the 2nd October the juniors walked up to the Bowling Green pub; we didn't know why we were going there, we were told that it was a secret. When we arrived we discovered it was the Radio Derby Bus. The bus travels to large towns and to small villages around the Derbyshire and East Staffordshire. The people who were kind enough to talk to us about the bus are called Mick and Marsha, the key workers on the bus. Marsha was telephoned by radio Derby and she talked about Winsters and the surrounding area, she was talking to Alex Trelinski. When Marsha had finished we played a game called "Name the mystery Building" the first group was Jayson, Henry, Joshua, Mrs Wright chose a building which was Winsters Hall, a famous House and the rest of the juniors had to guess which building it was. Then it was another group's turn until everyone had a go. Everybody received a car sticker and we collected a cooking leaflet. It was a great experience which everyone enjoyed.

Reported by Philippa, Jayson and Tavier



A vacancy has arisen for the post of Mid-day Supervisor at Winsters School The hours are 11.55 am – 1.05 pm Monday to Friday, term time only. The rate of pay is £5.93 per hour

For an application form or an informal chat, please contact Mrs Tomlinson on the above number.

The mobile police station will be in Winsters between 12.30pm and 2.30pm on the following day:

Tuesday 6 November And fortnightly thereafter

Citizen Advice Bureau visits Winsters Surgery

Thursday 15 November And 2nd Thursday of every month



Winster Wakes 2007 Annual General Meeting

Chair's Report

The crowning of the Carnival Queen set the tone well for our Wakes Week. Fern Ingham and her attendants looked great on the stage and Brian Long did a superb job of opening the proceedings. Despite the weather, the crowning was well attended as always, and this was true of the whole week. In a week of miserable weather, the various events and activities brightened up the village.

We continue to offer a super range of activities for Wakes Week. My thanks go to everyone on the Committee for their work over the year in putting together the programme and to all the volunteers who organize and run events and help in other ways. The visit of the Monterubbiano flag-throwing team ensured that Main Street was packed on Carnival Day, and it was good to see the Italians joining in the festivities.

There were many other highlights, plus one or two teething problems and issues to address, but nothing we can't sort out through continued team effort. The positive feedback from people in the village and beyond should remind us of how much Wakes Week is valued.

Mike Hatfield

In spite of the poor weather, the Wakes 2007 made a profit of **£1,673.63**. This was quite amazing, as really Wakes Week is all about having fun, and money making is not a priority. However, it is rewarding to be able to give **£1,500** back to the village.

From the requests for donations:

£100 - Winster Darby and Joan Club to help towards the cost of the Christmas Dinner.

£200 - St John the Baptist Church to help towards the cost of lighting.

£100 - Winster/Elton Luncheon Club for meals and visits.

£250 - The Twinning Association to help with costs for the next visit of the people from Monterubbiano.

£200 - Playing Field Association towards providing extra play apparatus, a barrier and ground maintenance.

£50 - Winster Christmas Tree Fund to replace the lights

£300 - Winster Football Club who are needing funds to provide a changing room.

£300 - Winster Morris towards the costs of anniversary celebrations next June, and of hosting the Italian Flagwavers last summer.

Next Year's Date SUNDAY 29 JUNE - SUNDAY 6 JULY

Heathcote—Applications for Grants Welcome

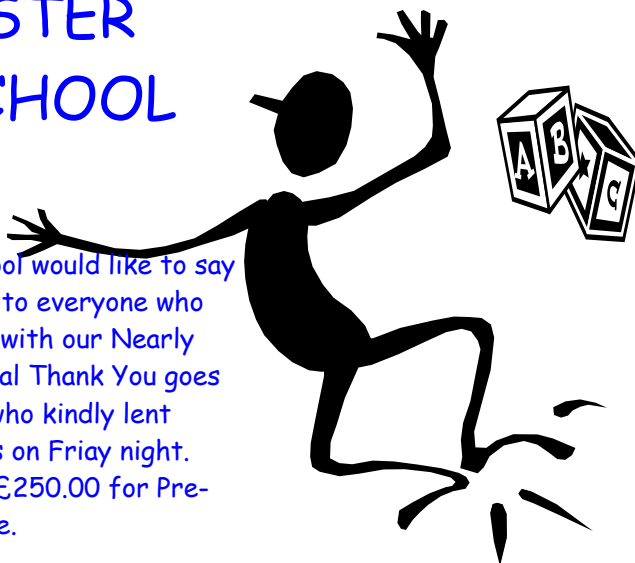
Health and education issues affecting the people of Winster are the Charity's main concerns, but the Governors will consider all requests relating to the welfare of local people. Applications in writing are invited. Those from or on behalf of individuals will be treated in strict confidence. Those from organisations etc should include a copy of the latest accounts and a statement of assets or accumulated funds.

The Secretary should receive applications by 21 November 2007.

Secretary: Veronica Kemble
Greystoke 7 Wyntor Avenue Winster DE4 2DU

WINSTER PRE-SCHOOL

Winster Pre-School would like to say a huge Thank You to everyone who helped in any way with our Nearly New Sale. A special Thank You goes to all the people who kindly lent Oona hanging rails on Friay night. We raised about £250.00 for Pre-School. Well Done.



**IF YOU HAVE ANY NEW IDEAS FOR EVENTS OR
ATTRACTIONS FOR WAKES 2008,
RING MARG 650090, MANDY 650181, CHRIS 650787
THANKS**

Glebe Mines Ltd. Submits Application to Extend Tearsall Quarry

Background to the Application

Glebe Mines has applied to the Peak District National Park Authority for consent to extend the existing Tearsall Quarry, on Bonsall Lane, in order to permit the extraction of Fluorspar. The application also involves restoration of the site, both existing and proposed, to reinstate the land for agricultural after use with retention of part for biodiversity. Glebe will not sell Limestone, the only material leaving site will be Fluorspar ore. Waste rock extracted to safely access the Fluorspar will be used to restore levels on the site.

Glebe Mines are based at Cavendish Mill near Stoney Middleton and are the only producer of Fluorspar in the UK, underpinning a viable UK Chemicals Industry. The company has sought to take on operational responsibility for its own sites incorporating Health and Safety, Planning, Environmental Control and final restoration rather than passing these tasks to contractors. This ensures responsible working within planning conditions and guarantees final restoration.

Fluorspar compounds are essential to a modern standard of living and for the majority of uses there are no readily available alternatives, these include - Refrigerants, Computers, Mobile Phones, Non-stick Pans, Medicines, Anaesthetics, Cars, Glass and Petroleum Distillation.

INEOS Fluor, based at Runcorn, is now the UK's only producer of HF (Hydrofluoric Acid), they currently meet the virtually all of their Acid Grade Fluorspar needs from Cavendish Mill and are Glebe's principal customer. At present the Chinese are severely restricting exports of AG Fluorspar and Glebe's UK customers have indicated that their businesses will be severely threatened if domestic Fluorspar production ceases.

The Proposals

The application area covers some 14 hectares and involves an extension of the current open pit to the north and west. Approximately 700,000 tonnes of Fluorspar ore will be extracted over a 6 year period. A further period of 1 year will be required to undertake final restoration of the site. The proposed mineral extraction represents a temporary use of the land, whilst meeting a nationally important demand for a strategic mineral.

Extraction will take place in 5 phases, each of approximately 14 months. These will be progressively restored in order to minimise the visual and landscape impacts of the proposal. At any one time only approximately one fifth of the total extraction area will be exposed.

Restoration will involve the use of limestone rock extracted during the operations, this will eliminate the need for importation of any restoration materials. This rock will be placed below ground level directly into the void space created during extraction. This will obviate the need for any visually intrusive stone stockpiles above ground. The site will be restored to a valley with shallow cliff features to the north. The majority of the site will be accessible to agricultural machinery and will be returned to grazing as the preferred after use with retention of part for biodiversity. Final restoration will provide an opportunity to add to the ecology of the area and will allow for the retention of some interesting geological structures.

The Application, and accompanying Environmental Impact Assessment, were submitted on 23rd August. It is anticipated that the application will be determined by The Authority's Planning Control Committee on December 14th.

Copies of the application are available for inspection at the Peak Park offices, Aldern House, Bakewell and at Glebe Mines, Cavendish Mill, Stoney Middleton.

Any residents with questions/comments about the application may call either Richard Pawley or John Elkins at Glebe Mines Ltd. on 01433 630966.

November 11, 2006

A modest panel on a sheltered wall
Is filled with twenty other English names.
And in the ground nearby, or not at all,
He may lie there: 'Known only to God', we're told.

Of course, I never knew great-uncle Reg,
A piano tuner, and a decent man,
As his friends and sisters always said;
But dead, as any other also-ran.

I see the mud, the lines of sightless men
Shuffling along the boards toward the rear;
Their breathless fellows froth in the bloody fen,
Or hang lifeless, limp as so much prey.

And on this numb November day, our rulers play
Upon the far-fetched metaphors which sell their story:
'Dulce et decorum est, prò patria mori'.

David Jones

To the memory of Private R A Clifton

Thanks from Darby & Joan

Thank you to the Carnival committee for the £100 donation. We would also like to thank David & Marilyn Bentley for the coffee Morning which raised £147.50. thanks to everyone who lent a hand and Carol and Ellen for their help with the refreshments..

Sandra Purslow

Payment Protection Insurance – Are you sure you are covered?

This type of insurance is generally offered to us when we take out a loan, mortgage or most types of credit. PPI is different to other forms of insurance in that the company will usually insure anyone without needing to see details of their personal circumstances and many policies are sold without explaining to the buyer details of the cover and the problems that can arise.

Buyers think they are covered only to find that when they come to claim their circumstances have been excluded and that it could have been cheaper to have covered the debt in another way.

Always ask for a copy of the policy and go through it carefully. Check specific clauses regarding age, employment, unemployment, self employment, benefits and excluded illness. If the terms do not or are unlikely to apply to you – don't waste your money!

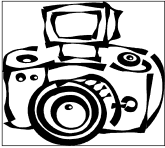
The CAB are happy to go through a policy with you to explain the exclusions or if you think a policy may have been mis-sold to you we can challenge it on your behalf.

Pension Credit

You can pick up a simple application form at the local surgery when you have your flu jab and send it back to the bureau in Matlock to enable them to see if you qualify. Don't be put off if you have savings - you may still get some!

Gillian Webber
GP Outreach Worker

The CAB visit Winster Surgery every 2nd Thursday in the month



**Chapel Studio
Photography is
coming
to Winster!**

FREE SITTING NO
OBLIGATION TO PURCHASE
£20.00 package inc. 11 prints

**Tuesday 13th November
11.30 onwards
including after school
The Burton Institute
Book in advance**

Website Design

- websites
- e-mail
- hosting
- domains
- e-shops



A professional website design
and management service for
local businesses of all sizes.

For more information call Mat or
Niki on 01629 582666

www.WyeTecWebdesign.co.uk

MAMTOR - SHIVERING MOUNTAIN.

New ploughed earth, like wrinkled velvet, raging clouds in turmoil, quickly
pass

Fluorescent milky moonlight, casting shadows o'er the grass

Creates the waves and ripples of a tormented sea,

Whilst high and dark and lonely, head back, aloof and proud

A sentinel of ages look down the green brown shroud

And mourns the passing of the years, of man's progressive march.

He cries his tears, he shakes with fear,

His shaking brings the fall of his own assembly.

He bitterly recalls the soft and gentle carefree days,

Of fond caress and kindly ways,

Of horse drawn carts, and hansom cabs,

Of Bakewell puds and currant slabs

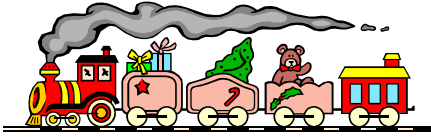
Of tea from hand made earthenware.

The laughter, the love, the picnics there,

And sees again the "tidy baskets."

Then sees it now -- everlasting plastic.

Ron Elliott.



toy library

Birth to 10 years

It's not time for birthday presents or Christmas but the weather is wet and the children are indoors again. Have you ever felt the need for new or different toys?

Well here is the simple and cheap solution!
**Borrow high quality and interesting and
unusual toys for as little as £1 a week**

Debbie Neath will be bringing a selection each Wednesday to the Toddler play session at
South Darley Village Hall

Pop in from 10.0—11.30 to place your order or collect toys; why not join in with the session too?

**See a selection of the toys at Winster Toddlers on
Thursday November 8th 10-12.00am.**

**Come to the Jubilee Room and have a look at the toys
available. They also hold a catalogue.**

Contact Sharon Talbot on 650718 for more details

Due to a late flurry of sponsorship after the village magazine copy date, the sum ultimately contributed to the Derby Cathedral Abseil was £1,222.

Many thanks to all

Monday 26 November at 7.30 in the Burton Institute. Rural Medicine: A Bloody Business. By Dr Leslie Millard.

From the mid 1700s illness and its management began to change. Old assumptions of causation, such as sinful behaviour, vaporous influences or an imbalance of 'humours' like blood or bile, were replaced by early science. However, the causes of infections were as yet unknown, and treatment by apothecaries, herbalists and barber surgeons was primitive and brutal. Blood-letting was common for fevers, lethargy and difficulties in pregnancy. In the country the major illnesses were injuries from work, infections at childbirth and the consequences of malnutrition.

Come along and see some authentic texts, with the chance also to handle some of the authentic equipment of the rural physician.

Free to a Good Home

2 x 1 litres motor oil (unused!) - tel 650530

Wanted from Good Homes

Pieces of light-weight material to make into wedding bunting. Sweet-pea shades (not orange, yellow, red). Small flower prints/stripes/checks etc., e.g. duvet covers.

Contact Lyria Jones, Buxton House, East Bank. Tel:650178

For Sale

We have two futons £10 each ono.

Tel. 650523

Bring your voice and have a jolly good sing



Meet at the Jubilee Room

on alternate Sundays 5.00 - 6.30pm

October 28th, November 11th, December 9th, 16th and 20th

December 9th, 16th and 20th will be to rehearse for the
Winster village Christmas Carol Service on Dec 23rd

For more info call Sarah on 650958

Winster Parish Council

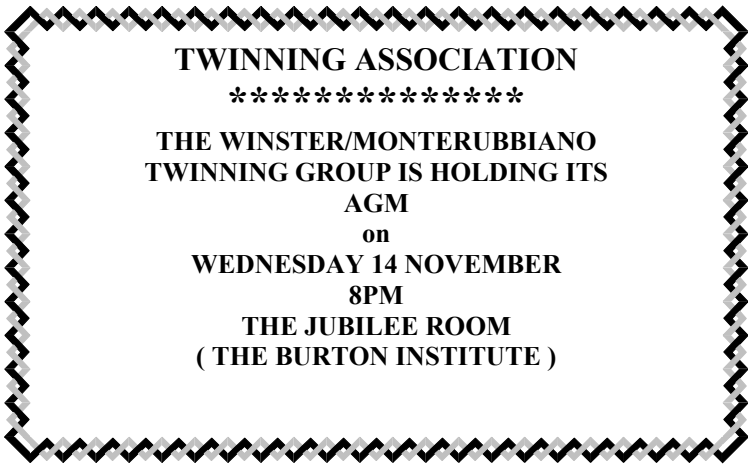
Although parts of East Bank have been tar sprayed, the narrowest stretch hasn't been done due to a backlog of work caused by the wet weather in June and July meaning that the small machinery wasn't available. DCC has assured me that this area will be tar sprayed next year. In the meantime, some of the patching work may deteriorate as it was not finished off to the normal standard in anticipation of the tar spraying which would have sealed it. This will be repatched if necessary in the spring. If any potholes occur, please report them to Call Derbyshire on 08456 058058.

This is the same number to use if you notice any streetlight isn't working or to report DCC grit bins which need refilling. Please let me know if any grit bins which have "Parish Council" on them run low as I need to arrange for these to be refilled. Please remember that the grit in all the grit bins is for use on the public highways and footways, and not on private property and that you **don't need much grit to do the job.**

When the roads are gritted, it's often hard to tell whether they've been done - they're using the right amount of about **one handful per square meter.**

Putting more grit down doesn't make the ground less slippery and in fact can cause cars to skid on the loose surface. As it's corrosive excessive amounts can cause damage to cars and roads as well as polluting the environment when it is washed off by rain. The grit is expensive and we're all paying for it in our Council Tax

Veronica Kemble 650530 / parishclerk@winster.org



A Big Thank You

Thanks to everyone who helped me to raise over £2,500 for my sponsored trek for Breaks4Kids. I can't decide whether the fundraising or the trek was the hardest part, but overall I enjoyed both. Iceland is a special country where they treat their environment with respect whilst harnessing its resources. Did you know that Iceland is the third largest producer of bananas in the world? They are grown in greenhouses heated with hot water from the ground and they produce enough bananas for their own use. That same water is pumped into all the houses for washing and showers, and their cold water comes direct from the icemelt rivers and doesn't need to be treated.

The scenery was beautiful and really varied with big lakes, volcanic lava fields, glaciers and hot boiling holes in the ground with beautiful colours and a strong smell of bad eggs. Our longest day on the trek was especially hard as the ice we should have been walking on had all melted and instead of walking on the level we had to go up and down lots of gullies. It seems they had unusually warm weather in June and July when we were struggling with cool wet weather and this had melted a lot of the ice.

Thanks again for all your support - if anyone still wants to donate, it isn't too late!

Veronica Kemble

Winster Village Shop Questionnaires

First, a really big thank you to everyone who filled in the shop questionnaire along with many constructive comments about future improvements and kind offers of help. All your responses are being followed up and will help the Steering Committee build on the strong foundations of the first two years as a community-owned enterprise.

Results show overwhelming commitment to the shop with three quarters of you rating it as “Most Important” to have a village shop and over a third using it more since it was bought by the community. Almost two thirds of respondents spend more than £10 a week, many a lot more than that.

The great majority like the 7-day opening hours and the service they usually receive. Responses were less positive about the layout, décor and presentation of stock – aspects you should see improved in the coming months. Many people suggested the need for a better range of really fresh local produce and, amongst other things, a dry cleaning collection service. Excellent ideas! 95% of respondents said they would use a delicatessen counter, and over half a small café facility if they could be provided. The most popular items currently are newspapers, dairy products and bread.

So, there is much to encourage all those who work and volunteer in the shop and some really helpful suggestions for improvement. Clearly the shop plays a crucial part in the life of Elton and Winster. As one writer said “...it is my lifeline”. If you want to look at the full statistical survey results, there will be a copy in the shop along with a more detailed written report which was prepared for the Steering Committee.

Simon Reynolds

(Winster Village Shop Association are very grateful to Simon and Ellie for their work in collating and analysing the data for this report and to all those who delivered and collected the questionnaires, especially Peter Eyre who covered Elton single-handedly.)

TO FRIENDS, NEIGHTBOURS AND CURIOUS BYSTANDERS.

We shall have an open ‘house warming’ in mid December

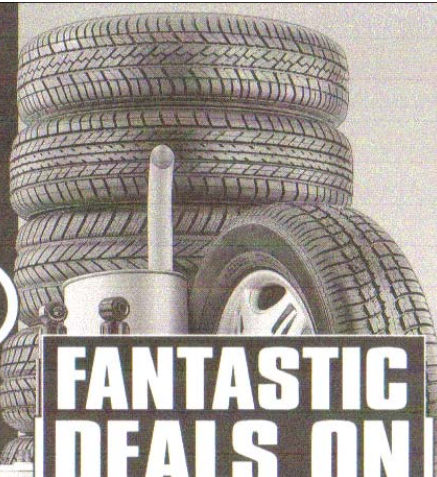
Jean & Bryan

SELECTA  TYRE LTD.

THE BEST PRICES IN TOWN

GUARANTEED!

We are a fully independent quality **Fast-Fit** company with twelve highly equipped autoservice centres and we promise to **BEAT** not meet, any local competitor's advertised price or substantiated quote, quality for quality, or brand for brand.



FANTASTIC DEALS ON

HIGH PERFORMANCE TYRES

MERCEDES 16" TYRES
from only **£39.95*** (205/45VR16)

SUBARU 17" TYRES
from only **£49.95*** (215/40ZR17)

BMW 18" TYRES
from only **£59.95*** (225/40ZR18)

PORSCHE 19" TYRES
from only **£89.95*** (235/35ZR19)

***INCLUDING VAT & FITTED FREE!**

2 135 SR13 NEW STEEL RADIAL £30 inc vat	2 165/70 TR13 NEW STEEL RADIAL £35 inc vat	2 175/65 TR13 NEW STEEL RADIAL £40 inc vat	2 185/65 TR15 NEW STEEL RADIAL £45 inc vat
---	--	--	--

ALLOY WHEELS
4x15" alloy wheels fitted with high performance tyres (185/50 R15) including fitting, valves, wheel balancing and VAT
4 from only £299 were ~~£348~~



EXHAUSTS MASSIVE SAVINGS
CATALYTIC CONVERTERS STOCKED & FITTED
FULL & PART SYSTEMS TO FIT ALL MAKES & MODELS
Rear Boxes from only **£12.99**
Eg. Nissan Micra DN361



4x4 TYRES
FROM ONLY **£29.99** INC VAT
195 R15 (Eg. to fit Suzuki Vitara)



SELECTA TYRE LTD.

ALL MAJOR CREDIT & DEBIT CARDS ACCEPTED
OPEN: MONDAY - FRIDAY 8:30-6:00
SATURDAY 8:30-5:00 *SUNDAY 10.00-12.30 MATLOCK ONLY

MATLOCK*
4 NEW STREET
FREEPHONE
0800 977 8174

BUXTON
FAIRFIELD ROAD
FREEPHONE
0800 977 8182

ALL ADVERTISED PRICES INCLUDE VAT. A SMALL CHARGE FOR TUBELESS VALVES & WHEEL BALANCING WILL BE MADE IF REQUIRED. IF YOUR SIZE OR MAKE IS NOT SHOWN HERE CALL NOW FOR YOUR UNBETTERABLE SALE PRICE. HURRY, OFFERS ONLY AVAILABLE WHILST STOCK LASTS

Visit us on our website - www.selectatyre.co.uk
WE NEVER CUT THE QUALITY • WE ONLY CUT THE PRICE



NEXT QUIZ

FRIDAY 26 OCTOBER

7.30

BURTON INSTITUTE

asking the questions

MARK & JAN VALLANCE

PROCEEDS TO THE LUNCHEON CLUV

QUIZ FOR NOVEMBER

FRIDAY 30 NOVEMBER

7.30PM

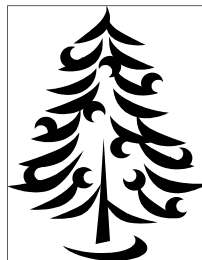
THE BURTON INSTITUTE

Asking the questions

MANDY BOULTON & FRIENDS

ADMISSION £2.00. RAFFLE £1

**Everyone is welcome
No need to be part of a team
Bring some drink
A few nibbles
Have a good time
Proceeds for the Village Xmas Tree**



To let from January 08 or sooner
Minimum 2 bedrooms Long or short letting
Preferably unfurnished
I am a non smoker and do not have any pets

John Lamb Tel. 650600

Christmas Choir for the Carol Service

Calling all singers

Come and join the Winster Village Choir
and be a part of the Village Christmas

Carol service on Sunday December 23rd 6pm

There are several rehearsals so we hope that you can make at least one
before the final run through on Sunday 23d December tbc.

December 9th 5—6.30pm Jubilee room

December 16th 4.45—5.45pm Jubilee room and

20th 7.30—9.00pm in church

Winster community Response Plan For Civil Emergencies

Residents may remember we set up an Emergency Response plan in which residents offered their skills or equipment in times of need. If you put your name forward for this can I please ask you to let me know if you have changed any of your contact details in the last year, i.e. address, mobile number etc.

Any new residents to the village who might be interested in putting their names forward are very welcome to contact me on 01629 650580 or williamsjudy@btinternet and I can explain the document.

Judy Williams

Garden for Sale

Located off the Gennel between Woolleys Yard and West Bank,
Approx 20mtrs by 20mtrs.

Offers to,
Paul Tozer

1 Parkview The Miers

Birchover DE4 2BQ

E-mail paul@stoneheritage.com

Tel' 650909.

Green Corner Jo Ferguson

I'm not ordinarily a fanatical organic food fan, preferring instead to buy locally produced food, but I was surprised to learn that a litre of ordinary milk takes over three times as much energy to produce than a litre of organic milk. This is because it takes a lot of energy to produce artificial fertilisers to make grass grow, whilst organic milk comes from cows grazing grass that has had only natural fertilizers applied (muck). Hmm.

And just in case you've been holidaying on Venus, Sainsbury's has now arrived in Matlock. Venturing down there after dark one evening, I was pleased that the checkout operator knew exactly where the recycling bins were and directed me to an impressive array of bins nestled up against the cliff base. You can recycle there:

glass (all colours)	cans
shoes	clothing
bric-a-brac and books	paper
plastic bottles/containers	
beverage cartons (e.g. Tetrapak milk/orange juice cartons) - no excuse for chucking them out now!	

Not bad, but let's see how good they are at getting them emptied!

With autumn fast upon us, don't forget to gather up those fallen leaves and put them in a plastic sack with a few holes punched in it. Sprinkle with a little water, tie the sack neck and shove it out of the way for a year: hey presto! leaf mould. If you have a compost heap, be conscious that the warmth inside it will make a nice snug winter home for wildlife like toads, worms and, if you are very very lucky, grass snakes, so don't disturb the heap til the spring now.

The views expressed in the Winster Village Mag are those of individual contributors

DIAMOND COURT DENTAL PRACTICE, WATER STREET, BAKEWELL DE45 1EW TEL. 01629 812991

Private & NHS Treatments * Full range of cosmetic treatments
*Oral Hygienist
Brightsmile and home tooth whitening * Child Friendly * Disabled Access

Winster Football Club Inaugural Rock Night

Saturday 3rd November

Winster Football Club, with support from Winster Entertainments Committee, are please to announce the inaugural "Saturday Night is Rock Night at the Burton Institute".

From the long lost moor of Stanton, we are proud to boast the first of what will hopefully become renowned happy and fun Saturday nights, the legendary local band, Corkstone. More information about them can be found at

www.myspace.com/corkstone.



With their interesting mix of Funky Rock, they will have the revived spirit of the village football team rocking in the isles. In support we have Danny Apple, details about him can be found at www.myspace.com/dannyapple1

To help ensure the evening goes with a swing, there will be a licensed bar. "The Bowling Green" is very kindly sponsored the ale, Winster Wallop, and "Simon James Joinery" and "Designs in Stone" are sponsoring the lager.

A raffle with a range of interesting prices is being organised by Iain Simpson and Simon Percival. Prices already include Chesterfield Football Club shirt signed by the Chesterfield Football Team.

All proceeds from the event will be used to improve the playing fields facilities for use by the village and surrounding communities.

Tickets are limited and £5.00 per person and can either be bought from Iain Simpson (T. 01629650057, Simon Percival (650115), Jonathan Harper (650322), the village shop or Post Office. To avoid disappointment, we would recommend purchasing your ticket sooner rather than later.

Doors on the night open at 7.30 pm and we look forward to seeing you all at the inaugural "Saturday Night is Rock Night at the Burton Institute".

L	S	U	M	A	T	O	P	O	P	P	I	H	R
I	Q	T	N	A	H	P	E	L	E	A	P	O	A
O	U	B	E	A	R	E	Q	J	B	N	I	R	T
N	I	U	S	X	P	F	T	A	I	T	G	S	T
E	R	L	H	D	O	F	O	C	S	H	O	E	I
P	R	L	E	E	A	A	L	L	K	O	E	X	G
O	E	Y	E	E	M	R	E	A	N	R	N	O	E
L	L	B	P	R	U	I	C	L	Z	E	I	F	R
E	W	O	L	F	P	G	O	H	E	G	D	E	H
T	O	M	O	U	S	E	Y	E	K	N	O	M	T
N	C	F	E	R	R	E	T	T	A	O	T	S	A
A	T	A	O	G	A	M	A	L	L	E	M	A	C

Cross out the letters in the grid diagonally or horizontally to find the names of the following animals. Just ONE of the animals in the list is NOT in the grid. The name of the missing animal is your answer.

antelope, bear, bull, bison, cow, cat, camel, dingo, deer, dog, elephant, fox, ferret, goat, horse, hedgehog, hippopotamus, jackal, lion, llama, monkey, mouse, ocelot, pig, puma, panther, rat, sheep, squirrel, stoat, tiger, wolf. More next month. Joyce.

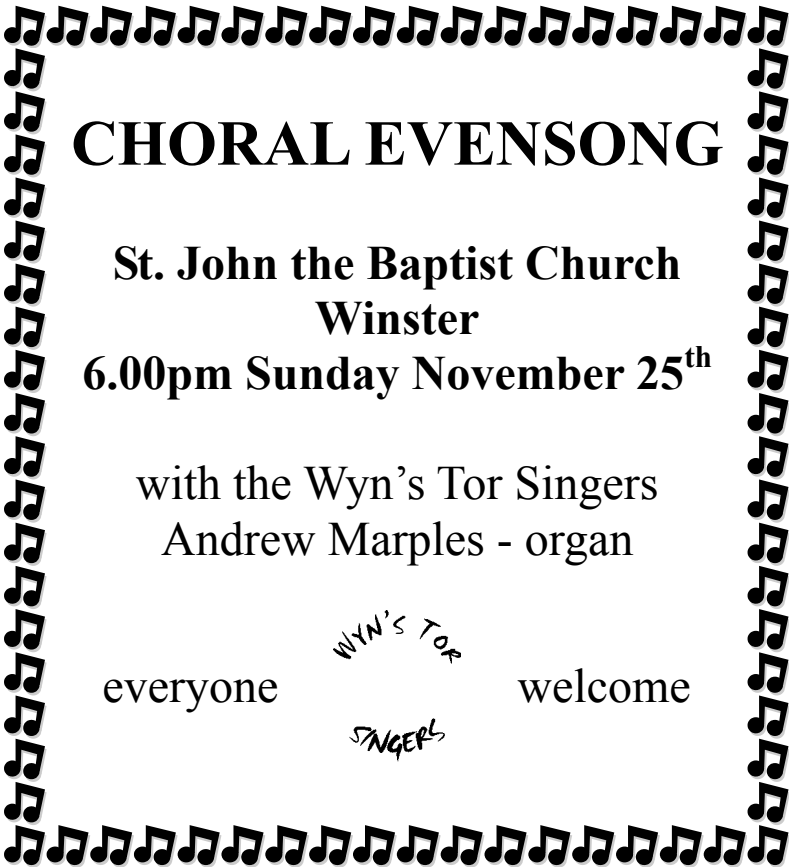
Church Services

John Marshall

Every Sunday Parish Communion at 9.30am

Winster Methodist Church

28 October 2.30pm Rev Alan Dawson
11 November 3.00pm United Service Parish Church
18 November 2.30pm Rev Alan Dawson



CHORAL EVENSONG

**St. John the Baptist Church
Winster
6.00pm Sunday November 25th**

with the Wyn's Tor Singers
Andrew Marples - organ

everyone welcome

*WYN'S TOR
SINGERS*

Winster Business Directory

<i>Miner's Standard</i>		650279
Real Ale Home cooked Meals	Top of the Bank, Winster	
<i>Tulips Florist</i>		815816
Flowers for all occasions		
<i>Driving Lessons</i>	<i>01629 650175 or</i>	07879
First lesson free	Friendly Female Driving Instructor	268738
<i>Matlock Glass Co Ltd</i>		582043
Replacement windows & doors, double glazing. Safety glass		
<i>Thomas Greatorex & Sons Funeral Directors</i>		582470
Established in since 1892 The Green Matlock		
<i>Dryad Tree Services</i>		650145
Tree Services & Woodland management		
<i>Salisbury & Wood</i>		582272
Builders Merchants Old Coach Road, Tansley		
<i>Bowling Green Inn</i>		650219
Good home cooking. East Bank, Winster		
<i>L & JM Webster Milk Retailers</i>		584797
Delivering your milk, local produce and other products		
<i>Peak Cottage Plants</i> christinelewzey@btinternet.com		650428
Hardy perennial plants, design & planting service		
<i>Peak Insurance Services Ltd—24 Bakewell Road, Matlock</i>		582911
Personal Service for all Business and Home Insurance		
<i>M. Markovitz Ltd— Builders & Plumbers merchants</i>		753773
Station Road, Darley Dale DE4 2EQ		
<i>DJG's Motors Taxi Service Birchover</i> <i>650025 or</i>		077672
4 + 8 seater Local & Long Distance, Airport etc.		38331

Winster Business Directory

<i>All Sewn Up</i> Curtains, blinds, loose covers, alterations—call J. Noble	582421
<i>Peak Stonescapes</i> Drystone walling, stonework and landscaping	650480
<i>R Stone Joinery</i> Main Street, Elton. All types of Joinery Work undertaken	079718 15683
<i>Leacroft Garage and Car Sales</i> All mechanical and body repairs to any make, MOT	650253
<i>Steve Salfield</i> <i>steve@stevesalfield.com</i> Jazzsax—Jazz Blues, Rock'n'Roll bands for all occasions	650183
<i>Peak Stonescapes & Stone Walling</i> Natural Stonework and Hard Landscaping	650418
<i>Peak Oil</i> Domestic Heating Oil	01246 450242
<i>Designate Products</i> <i>www.designateproducts.co.uk</i> Handmade Creative Interior Accessories	079748 19235
<i>David Barnsley</i> Painter & Decorator (Interior & Exterior)	650588
<i>Local Driving Instructor ask for Tony</i> First 2 lessons £5.99 each (07814899967)	650505

We list local businesses at £20 per year: send details to mag@winster.org, or drop a note via the Post Office or call 01629 650549
Also, individual adverts with graphics are £5 per month for a 1/5 page.
Many thanks

WINSTER DIRECTORY

Village Mag	Anthea Rawlence	mag@winster.org	650480
Burton Institute: Chair	Frank Mason	frankthewitch@yahoo.co.uk	650738
Burton Institute: Bookings Wheelchair (also Secret Gardens, Christmas Tree)	Gill Geddes	gill@winster.org	650364
Burton Institute: Photocopier/Computer	John Geddes	john@winster.org	650364
Playing Fields/Tennis Court Bookings	Gerry Harpham		650412
Pre-School ("Playgroup")	Cathy Banks		07799 08244
Toddler Group	Irene Webster		650248
Darby & Joan	Sandra Purslow		650222
School: Clerk	Veronica Kemble	info@winster.derbyshire.sch.uk	650238
Village Shop: Manager	Steve Flitter	shop@winster.org	650683
Post Office:	Carolyn Ludlam		650034
Winster Surgery	Leacroft		650207
Carnival: Chair	Mike Hatfield	carnival@winster.org	650468
Parish Council: Clerk	Veronica Kemble	parishclerk@winster.org	650530
Parish Council: Chair, Neighbourhood Watch	Brian Long	parishchair@winster.org	650780
Entertainments Group History Group	Geoff Lester		650090
Tapestry Group: Viewings/Presentations	Wendy Kirton Betty Dawes		650497 650768
District Councillor	John Moseley		650760
Churchwardens	Roland Corfield Roy Witham		734480 650329
Curate	John Marshall		650310