



Distributed free to homes in Winster.  
40p to non-residents

Items — to [mag@winster.org](mailto:mag@winster.org)  
or to Winster Post Office  
by 18th of the month.

### Is your home energy efficient?

Did you know that grants are available for owners and tenants to help cover the cost of improving the energy efficiency of your home? This includes insulation, water tank jackets, thermostats and central heating.

To qualify you must be receiving a means tested benefit such as pension credit, income support or housing benefit or a disability related benefit such as Disability Living Allowance or Attendance Allowance. Other benefits may also qualify you. People over 60 may qualify for a basic improvement grant of £300. To see if you qualify telephone the Eaga Partnership on : freephone 0800 316 6011

Gillian Webber  
CAB GP Surgery Worker

(more on energy saving in this month's Green corner)

**The Citizens Advice Bureau visit Winster Surgery every 2<sup>nd</sup> Thursday in the month.**

**Appointments can be made at the surgery.**

Pilates Returns  
Starts Monday 10 September  
*New time 5.30pm to 6.30pm*

Please enrol in advance  
By leaving cheque (payable to S.J. Burnett)  
or cash for £18.00 for first 6weeks  
at Winster Post Office

Tel. 650480 for more info

## WINSTER DIARY

### **Key to Venues:**

*BI=Burton Institute, JR=Jubilee Room, CH=Church, MH=Market House,  
MS=Miners Standard , BG=Bowling Green, PO=Post Office*

25	26	Aug			Elton Beer Festival Start 2pm each day	
Fri	31	Aug		*	Methodist Coffee Evening 6.30pm	BI
Sun	2	Sept		*	Winster Bacon Butty Walk	
Mon	10	Sept		*	Pilates 5.30—6.30pm book First	BI
Tues	11	Sept		*	Yoga 7.30pm	BI
Thur	13	Sept			Patrick McLoughlin MP calls -10.45am	PO
Sat	15	Sept		*	Did You Know Day 10am to 4pm Ag Centre	Bwell
Sun	16	Sept		*	Sing with Us 5.00 to 6.30pm	JR
Tues	18	Sept		*	Village Mag copy Date Village Shop AGM	
Mon	24	Sept		*	Winster History Group 7.30pm	BI
Fri	28	Sept		*	Winster Village Quiz 7.30pm	BI
Sat	6	Oct			Village skip PreSchool Nearly new Sale 10.30– 12.30	BI
Tues	9	Oct			Winster Carnival Grants Meeting 8pm	MS

*\* Further info elsewhere in the Magazine*

This diary (with extra details of events in future months) also appears on the Winster Website at **[www.winster.org](http://www.winster.org)**

To add an event to the diary, email the details to [diary@winster.org](mailto:diary@winster.org) or hand in a note to the Post Office.

## Did You Know' Day

Derbyshire Dales District Council is organising a 'Did You Know' Day which will take place at the Agricultural Business Centre in Bakewell on Saturday 15 September. Open between 10am and 4pm residents will get a chance to learn more about community safety; book a fire safety check; find out about the possibilities for recycling and waste; get advice from the Peak District National Park Authority on planning issues for renewables; find out

Sponsored Abseil 8 & 9 September 2007

Jim Daw and your Teddy will be doing a sponsored abseil for Derby Mountain Rescue Team

If you are up a mountain enclosed by fog

No sight of any other scout

You're lost, confused and in a bog

Then give Mountain Rescue a shout



If you have not contributed to the village shop for my book would you please donate to this cause?

Call me Jim Daw on 650550 or call at the Miner's Cottage, Winster

The mobile police station will be in Winster between 12.30pm and 2.30pm on the following dates:

Tuesday 28 August And fortnightly thereafter

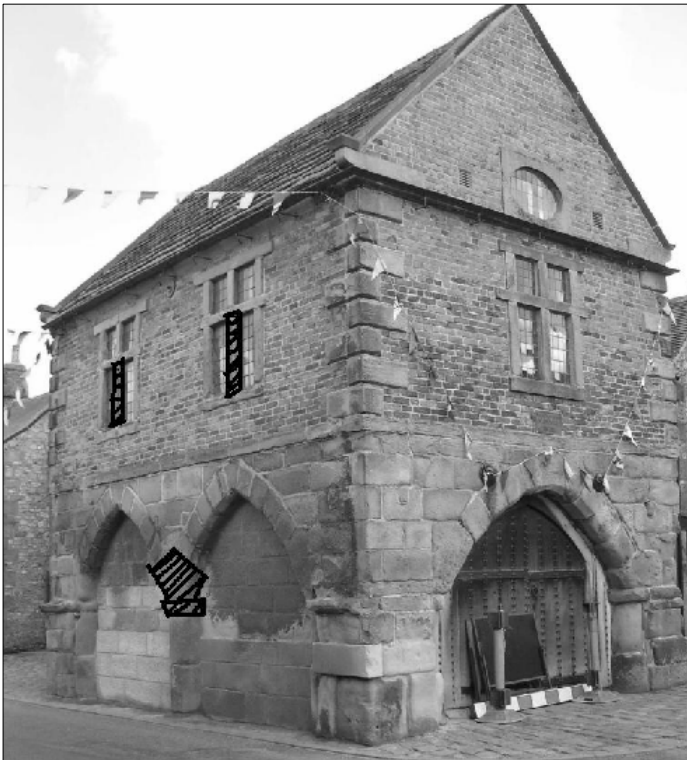
Citizen Advice Bureau visits Winster Surgery  
Thursday 14 September

And 2nd Thursday of every month

## Winster Market House

Winster Market House has now been in the care of The National Trust since 1906 when this wonderful building dating from the late 17<sup>th</sup> or early 18<sup>th</sup> century was restored through the efforts of local people. Over time some of the stonework has decayed and the leaded windows are in such poor condition that it is not possible to replace broken panes without replacing the lead work and glazing bars. The stone on the road side is decaying quickest due to the impact of salt and other pollution from the traffic.

The Trust is going to carry out further repairs to Winster Market House this autumn, and the photo below shows the stonework which is to be replaced. The glazing will be undertaken by a specialist contractor and the stonework by the Trust's own Masons who are based at Hardwick Hall. The Trust plans to continue undertaking small scale repairs as they become necessary, rather than trying to carry out major works in one session which would have much more impact on the looks of this very special structure.



**This year's work will cost around £5,000 and similar amounts may be needed in future years to keep the structure in sound condition.**

Local people can make a contribution towards the costs of this work, either at Winster Post Office, or by sending a cheque payable to The National Trust (marked Winster Appeal) to:

The National Trust, East Midlands Regional Office,  
The Stableyard, Clumber Park, Worksop,  
Nottinghamshire S80 3BE

Credit Card donations can be made by phone through the South Peak Estate Office on 01335 350503

Many thanks.

## **Parish Council News**

We now have a full compliment of Parish Councillors following the elections in May and subsequent co-optation. The Councillors are Mat Adlam-Stiles, Paul Armitt, Jo Ferguson, Rob Greatorex (vice chair), Stephen Harrison, Brain Long (chair), Don Shimwell and Allan Stone. Their contact details are on the noticeboard at the bottom of East Bank.

Dog fouling in the village has got worse again, especially on the Woodhouse Lane recreation field. Please can all dog walkers ensure that they clean up after their dogs. The dog waste bins are located at Leacroft Green, Woodhouse Lane close to the play area, at the bottom of West Bank, on The Griffins (by the swings at the top of the Banks) and near to the toilets off East Bank.

With an increase in awareness of environmental issues, it is good to see that the recycling area at Bank Top is being well used. If you find any of the bins full, please take your recycling home and contact Derbyshire Dales District Council on 761100 so that they can arrange for it to be emptied. Piles of recycling which won't fit into the bins not only looks unsightly but is also a hazard to people and animals and is likely to blow around.

Veronica Kemble 650530 parishclerk@winster.org

Could you provide guidance in enabling young minds to flourish?  
**We need Relief Staff at Winster Pre School.**

We are open Monday and Tuesday 9.30 – 1.30  
Wednesday and Thursday 9.30 – 1.00  
for 2½ – 4 year old children to learn through high quality play.

We need occasional relief staff to cover planned and unplanned staff absence. For details and an application pack please call  
Cathy on **07773 787816**.

The closing date for application enquiries is 7<sup>th</sup> September 2007



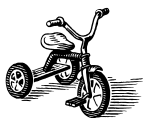
*Applicants who are offered work will be required to provide information for a CRB check to be carried out*

**Winster Pre-School**  
**Nearly New Sale**

**Buy or Sell quality children's clothes,**  
toys, nursery equipment and maternity wear.

( No age range. Does your school child's  
bedroom need a clear out ? )

**Saturday 6th October 2007**  
**10.30am—12.30pm**



**The Burton Institute,**  
**West Bank, Winster**



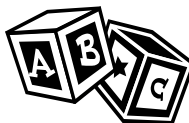
Entry 50p  
Refreshments also available

**Volunteers required!** All volunteers are  
rewarded with a sneak preview.

For further information call  
Claire on 01629 650825 or  
Oona on 01629 650040



# **Winster Pre-School National Lottery Bonus Ball**



## **IT'S YOUR CHANCE TO JOIN IN!**

Money raised will pay for running costs and to ensure we are able to keep the Pre-School open!

Each number costs £1 per week this must be paid for in advance of the draw, each person can pick one of the lottery numbers. Should that number appear as that Saturday nights National Lottery bonus ball, then whoever holds that number will win the prize pot. If no one has that ball then the prize will rollover into the following week.

We intend to collect in 10 week blocks, thus costing £10.00

**Weekly cash prize of £20.00 on an Odd Dated Saturday and  
£25.00 on an Even Dated Saturday and the final draw on 1<sup>st</sup>  
December will be £40.00 cash.**

All profits go to Winster Pre-School.

**The first draw will be Saturday 29th September  
GOOD LUCK!**

**INTERESTED? CALL OONA ON 650040 OR CLAIRE 650825.**

**Bring your voice  
and have a jolly good  
sing**



We are singing a range of popular and light-hearted sing along songs (it will not be formal, difficult or require sight singing skills!!)

Give it a try ~ go on don't be shy

Meet at the Jubilee Room on alternate Sundays

5.00 - 6.30pm

September 16<sup>th</sup>, 30<sup>th</sup>, October 14<sup>th</sup> 28<sup>th</sup>

Helens Trust  
Registered Charity No 1093061

## WINSTER BACON BUTTY WALK

Sunday 2<sup>nd</sup> September 2007  
Food from 10am at The Byre, Horsecroft lane, Winster.  
Walk commences 11am.

A family walk either 6 or 8.5 miles in aid of Helens Trust, suitable for all, dogs welcome on a lead. The walk includes refreshments - bacon butty, vegetarian sausage, tea, coffee or juice. Raffle prizes £5.00 minimum donation to Helens Trust. Further information or to register please call Judy Williams on 01629 650580 or [williamsjudy@btinternet.com](mailto:williamsjudy@btinternet.com). Tickets also available at the Post Office.

## HELENS TRUST BALL

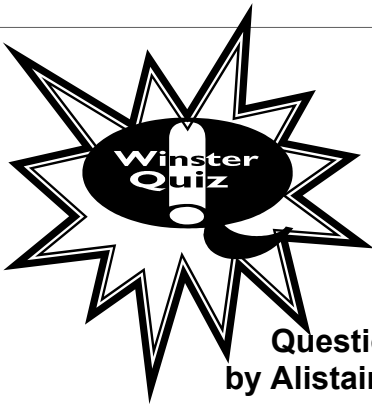
Saturday November 24<sup>th</sup> 2007 Baldwin's Omega Sheffield.  
The theme for the evening will be Scott Fitzgerald's The Great Gatsby. The dress code will be elegant twenties or black tie and evening dress.  
Tickets are £58.00 per persons for a table of 10 persons.  
Further details Mrs C Smith 1 Fairfield Court Ashgate Chesterfield mobile 07821714063 or Judy Williams 01629 650580

### Burton Institute News



The maintenance update for this summer is that the Main Hall floor is to be sanded, resealed, and re-marked, probably between the 23rd and 31st of August.

There is now a piano in the Jubilee Room, kindly donated by Pam Hatfield. It has yet to be tuned, needing time to settle down after its journey from the far end of Main Street. For the time being it must not be moved. An added reason for this restriction is that its small brass wheels would cut through the Flotex floor covering. We are investigating the possibility of replacing the wheels with something kinder to the carpet. Please consider the piano to be totally off limits until the notice on it is replaced by a permanent one. Thank you.



FRIDAY 28 SEPTEMBER  
Beginning a New Season of the  
Village Quiz

Admission £2 Raffle £1  
Proceeds to PreSchool

**Questions set and asked  
by Alistair and Christine Wright**

Bring a bottle and some nibbles  
No need to be part of a team it's very light hearted and fun  
New people VERY welcome

**7.30pm Burton Institute**

# Winster Garden-

Answer to Puzzle Page : Flowers (see page 24)

## District Councillor's Corner

Following the recent elections I have been asked to serve on two further committees: The Community & Environment (C&E) Committee and The Partnership & Regeneration Overview Committee. I hoped these would give me the chance to get my teeth into and influence the positive direction and policies of the council. Unfortunately it also involves taking difficult and potentially unpopular decisions. The first of these was when the C&E committee was presented with the report of the officers recommending the closure of Sherwood Hall Leisure Centre.

I don't want to go into all the detail of it here, it is not the place, but I do want to explain why I voted for its closure, and I would also like to ask you, the people I represent in such a situation, whether you think I made the right decision. What galls me most is the insinuation that as a Conservative councillor and part of the controlling group I voted en masse with the rest of the Conservative councillors for its closure regardless of the evidence and representations which were presented to me. That I could have sat there for over 3 hours and then dutifully have mumbled 'for' at the appropriate moment, I'm sorry but I have better things to do!

I voted to close Sherwood Hall for the following reasons, in no particular order:

On balance (a crucial phrase in this situation), I believe to keep it open would not have been the best use of funds available to the council across the district.

I decided that, of the people in the ward I represent, the majority would have made the same decision. This does, I concede, have a connection to me as a Conservative councillor as it was as one that I was re-elected in the ward. I believe it is the best decision for the sport and leisure facilities of Matlock in the longer term. I certainly have only been able to spend money once and throwing good money after bad has rarely been a good policy. All the money spent on enabling Sherwood Hall to limp on could not be invested in the newly planned facilities. There seems to be a chip on some of the Matlock councillors shoulders that it is the poor relation to Ashbourne, Bakewell and Wirksworth. Whether or not this has been the case it seems to me that now is Matlock's time and not looking to the future is of no to benefit anyone. There was the suggestion that Sherwood Hall could be kept open 'held together with chewing gum', and that this would be better than nothing. As a farmer I can understand this sentiment but when representing a council responsible for the safety of the public and its own employees it is not a realistic option.

Finally, as someone best described it, it is like an old car, had we decided to spend the money to make Sherwood Hall fire safe, electrically safe and up to minimum disabled access legislation, the head gasket or the chassis may have still cracked tomorrow.

So my question for this month is, did I make the right decision to vote to close Sherwood Hall? Your views to [john.moseley@derbyshiredales.gov.uk](mailto:john.moseley@derbyshiredales.gov.uk) or 01629650760.

Last time I asked for your thoughts on the trade off between doorstep plastic and can recycling and weekly bin collections. Essentially of the responses I received there was a roughly 50/50 split. Half are keen to expand recycling whilst the rest held weekly bin collections as sacrosanct. There was also the odd suggestion of interest which had a different take on the way forward. Such ideas are what make this process useful especially when the issue comes to be discussed at council. Thank you.

(Cllr) John Moseley



**WINSTER WAKES  
CARNIVAL 2007**

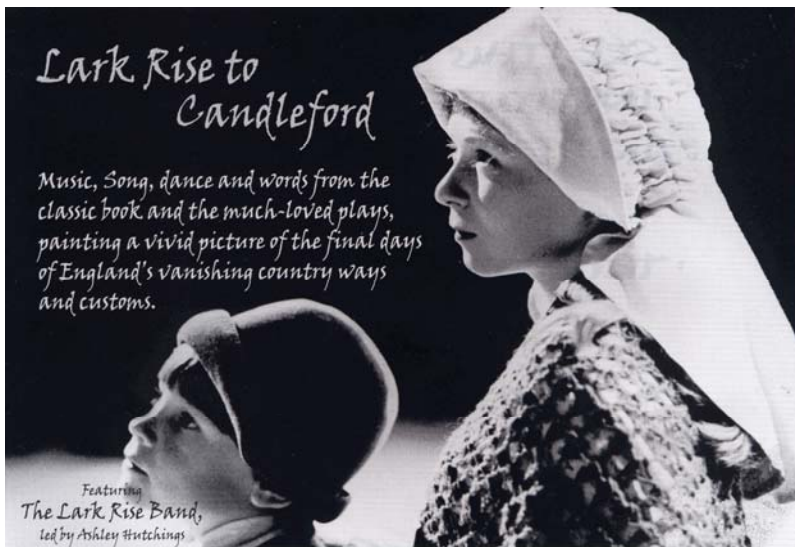
The Committee invites village groups to apply for grants from Carnival funds 2007.

Applications will be considered at the AGM on

**9 October, 8pm  
in the Miners' Standard**

Please apply to Christine Wright (Treasurer), The Homestead, East Bank, Winster.

Everyone is welcome at the AGM, and we hope that some of you will help in organising events at next year's Wakes. We also would like people to join the Committee to bring in new ideas.



Coming to Winster – The Lark Rise Band: Friday 12th October at 8pm  
Flora Thompson's three classic "Larkrise" books describe rural life in the late 19th and early 20th Century.

The BBC have commissioned a new 10-part dramatisation of the books, to be screened on BBC1 in 2008 – and this renewed interest has prompted folk musician Ashley Hutchings to tour with the music that he wrote for the acclaimed 1970's National Theatre production based on the books – along with a selection of readings and the occasional dance. Among larger (and frankly more prestigious) venues, he has included the Burton Institute in his tour schedule.

Ashley has assembled a new band – the Lark Rise Band – to tour with him. Those who caught either of Ashley's shows in Winster during the last year will recognise most of the line-up: Ashley Hutchings, Judy Dunlop, Simon Care, Ruth Angell and Mark Hutchinson. The evening is being promoted by Ashley Hutchings, but bar profits will go to the Winster Twinning Association.

Tickets are £12 each (£8 children), from Gill Geddes (650364) or Winster Post Office. We have put aside an initial quota of tickets for Winster people, but can't hold these back very long – Ashley has a very strong following, and we are getting enquiries from a wide radius. Book early if you want to catch this exciting event.

## **WINSTER VILLAGE SHOP DEVELOPMENT.**

**Work starts on October 1<sup>st</sup>.** Plans are approved, a contractor is appointed and the work is phased to try to keep the shop open throughout the work. Geoff Dalton has taken on the role of project manager with help from other members of the steering group. Sub contractors for electricals and plumbing are not appointed so if you or any friends suitably qualified are interested in this work please contact Geoff ( 650213 ).

**But the total cost is £ 130,000** and current funding is £ 30,000 - a grant of £20,000 from the Peak Park New Environmental Economy fund, £9,000 of fees paid up front from trading surplus and £1,000 from various local fund raising events.

**So we need another £ 100,000 to complete the project.** There are three areas where we can look for funding.

**Grants.** We have submitted a bid to Big Lottery but don't hold your breath. Success is rated as 1 in 10. We continue to look for and lobby other grant sources.

**Local Business.** We have a list of businesses that we will approach for donations but it is not by any means complete. If you can suggest local businesses that might look on our project favourably and have a contact who might influence our application please let Paul Turner 650129 or me know.

**Individual donations and interest free loans.** The village made a splendid contribution towards buying the property and the shop in 2005 so hopefully we can look again for further loans and donations from within the community. The original aim was to repay loans within 15 years and this is still our aim. We made a trading profit last year of over £5,000 and if we were not saving for the development programme we would have repaid 5% ( £ 50 per £ 1,000 loan ). With the development complete increasing sales and profits and no additional commercial loan we should achieve annual repayments of 10 % a year.

**We need help.** So September is a key month for raising funds. We need help. Not just donations but help sending out letters, circulating newsletters etc. etc. If you would like to join the fund raising team please phone me on 650220.

**Annual General Meeting.** Whatever do please come to the Annual General Meeting on Tuesday 18<sup>th</sup> September at 8.00 pm in the Burton Institute to hear our plans and give us your views on your shop.

David Mitchell

# Bakewell · Stanton · Winster · Matlock

HULLETS **172**

Journeys marked **B** are operated under contract to Derbyshire County Council

## Monday to Saturday

	<b>B</b>	<b>S</b>	<b>NS</b>	<b>S</b>	<b>NS</b>	<b>B</b>	<b>B</b>	<b>B</b>	<b>B</b>	<b>B</b>
<b>Bakewell, Square (B)</b> .....	0721	0900	1100	1200	1300	1500	1620	1715	.....	2235
<b>Youlgreave, Grove Place</b> .....	0736	.....	.....	.....	.....	.....	1730†	.....	.....	2247
<b>Stanton in Peak</b> .....	0746	0910	1110	1210	1310	1510	1630	1745	1915	2255
<b>Birchover</b> .....	0751	0914	1114	1214	1314	1514	1634	1749	1919	2259
<b>Elton, Duke of York</b> .....	0801	0922	1022	1122	1222	1322	1522	1642	1757	2306
<b>Winster, Hall</b> .....	0805	0927	1027	1127	1227	1327	1527	1647	1802	2304
<b>Wensley</b> .....	0809	0931	1031	1131	1231	1331	1531	1650	1805	2308
<b>Darley Dale, Church Inn</b> .....	.....	0935	1035	1135	1235	1335	1535	.....	.....	.....
<b>Darley Dale, Institute</b> .....	0817	0940	1040	1140	1240	1340	1540	1656	1811	2310
<b>Matlock, Bakewell Road</b> .....	0825	0947	1047	1147	1247	1347	1547	1703	1818	2315
<b>Matlock, Rail Station</b> .....	.....	0950	1050	1150	1250	1350	.....	.....	.....	.....

## Bank Holiday Monday

1000	1300	1530	1730
.....	1315	1545	1745
.....	1010	1323	1553
1015	1328	1558	1758
1023	1336	1606	1806
1028	1341	1611	1811
1032	1345	1615	1815
.....	.....	.....	.....
1037	1350	1620	1820
1044	1357	1627	1827
.....	.....	.....	.....

## Monday to Saturday

	<b>B</b>	<b>S</b>	<b>NS</b>	<b>S</b>	<b>NS</b>	<b>S</b>	<b>NS</b>	<b>S</b>	<b>NS</b>	<b>S</b>	<b>B</b>	<b>B</b>
<b>Matlock, Rail Station (bay 2)</b> .....	.....	0952	1020	1120	1220	1320	1420	.....	.....	1620	.....	.....
<b>Matlock, Bakewell Road (D)</b> .....	0755	0955	1023	1123	1223	1323	1423	1605	1623	1710	1820	2315
<b>Darley Dale, Institute</b> .....	0802	0852	1002	1030	1130	1230	1330	1430	1612	1630	1717	1826
<b>Darley Dale, Church Inn</b> .....	.....	1004	1032	1132	1232	1332	1432	.....	.....	1632	.....	2323
<b>Wensley</b> .....	0807	0857	1009	1037	1137	1237	1337	1437	1617	1637	1722	1830
<b>Winster, Hall</b> .....	0814	0902	1014	1042	1142	1242	1342	1442	1622	1642	1727	1835
<b>Elton, Duke of York</b> .....	0819	0906	1018	1046	1146	1246	1346	1446	1626	1646	1731	1839
<b>Birchover</b> .....	0828	0914	.....	1054	1154	1254	1354	1454	1634	1654	1739	1846
<b>Stanton in Peak</b> .....	0833	0918	.....	1058	1158	1258	1358	1458	1638	1658	1743	1850
<b>Youlgreave, Grove Place</b> .....	.....	.....	.....	.....	.....	.....	.....	.....	.....	1750	.....	.....
<b>Bakewell, Square</b> .....	0845	0930	1110	1210	1310	1410	1510	1650	1710	1805	1900	2357

## Bank Holiday Monday

1100	1400	1630
1107	1407	1637
1112	1412	1642
1116	1416	1646
1121	1421	1651
1129	1429	1659
1134	1434	1704
1142	1442	1712
1157	1457	1727

**CODE:** **NS**—Not Saturdays;  
**S**—Saturdays only;  
 †—Runs via Middleton 1/735.

■—On schooldays runs to/from Lady Manners School.  
 □—On schooldays runs to/from Highfields School (Stanhomes site).  
 §—Operated by STAGECOACH IN CHESTERFIELD.

**No Sunday service**

The 172 bus timetable will change immediately the new road layout is opened in Matlock - at the time of writing, this is scheduled for Thursday 13th September, but it looks like it may well slip.

Under the new timetable, early morning and late afternoon/evening 172 services are unchanged - but there are some substantial changes during the middle of the day. And whilst Matlock will have a new Bus Station outside the Railway Station, early and late buses to/from Winster will not call there. All buses will continue to call at the current Bus Station - shown in the new timetable as "Bakewell Road (D)".

The key Monday-to-Friday changes are:

Towards Matlock, the 12.27 from Winster (12.00 from Bakewell) will run an hour later.

There is one less bus in the Matlock-Winster-Bakewell direction - the 11.18 from Matlock (11.35 from Winster) will no longer run. The 1318 from Matlock (1337 Winster) is retimed to leave Matlock at 1420.

There are also changes to the Saturday timetable. The time table is shown on the left

#### Announcing New services

DAB 32 Bus to Alfreton via Winster and Matlock  
September 7th and fortnightly at 10am ish  
Leave Alfreton 1.00pm

DAB33 Bus to Ashbourne via Matlock

September 14th and 2nd Friday of the month at 10am ish  
Leave Ashbourne 1.00pm

Book first on 01629 814889 or they won't call here!

FOR SALE

Table top fridge never been used  
£80.00 ono

Tel. 01629 650744

## Insurance and spare car keys, an Aid Memoir for fellow travellers

I recently went on what was supposed to be a gentle journey through France and Spain, visiting places and hotels I had previously enjoyed, the Pamplona Bull Run, the Memorial and Landing Beaches at Caen, a Wine Warehouse in Boulogne and back for Secret Gardens.

Unfortunately, as the more observant will have observed, I ended up with a broken shoulder, three broken ribs and assorted cuts and abrasions.

Everything had gone to plan until I arrived at Caen, where things became seriously unbuttoned. I parked my car adjacent to the Marina in the centre and was looking forward to a stroll round the Marina in the pleasant early evening sunshine; together with the "pint" I had been promising myself for the last two hours.

I checked into my hotel, borrowed a luggage trolley, went to my room and then went to return the trolley. I was distracted at the top of the stairs leading to the foyer and ended up taking the express route down the steps, landing on the trolley, which refused to give.

I was well cared for and taken by ambulance to Caen Hospital (sirens, lights, and the full works) where I remained for the following four days.

I was alone, could not possibly drive and was therefore faced with the tasks of arranging both my own repatriation and that of my car.

I always take a spare set of car keys with me on holiday and on this occasion had placed them in my briefcase, the thinking being, that should I lose my car keys, I would only have to break some glass to continue my journey, rather than have to wait for a new set of the latest fancy and very expensive electronic keys.

I keep my RAC card and my Annual Travel Insurance card with me in my wallet.

I telephoned my hotel and asked them to take the spare keys from my briefcase which was in my room and take my car from its parking place and put it in their garage, from where I would have it recovered. This had the effect of preventing huge parking fines and the likely consequence of having it towed away and impounded.

I telephoned my travel insurers who set about arranging my repatriation. They first identified that I would need to be flown home, then the quickest and most efficient way to achieve it, at this point my mobile ran out of battery. I was then reliant on the goodwill of the hospital staff, who generously allowed me the use of the Ward 'phone but understandably, very sparingly.

My travel insurers, Saga, volunteered to fly someone out to assist me home, which I declined and then arranged a posh taxi to take me to Rennes airport, where they had purchased two seats (I was heavily bandaged and could not fit into one seat) on a Flybe flight into Manchester.

I was wheel chaired at both ends and the limousine sent to Manchester brought me very comfortably back home.

My car was collected very efficiently by the RAC and returned some two weeks later, but as I was in no position to drive, the time was of no consequence.

The purpose of this brief resume of what seemed like four very long days is to emphasise that it "can happen to you" and the equal value of good insurance for you and your car.

When reviewing my car insurance, I took into account the RAC recovery package included in my premium and with Saga, their small print was explained very well and the premium competitive.

As Saga also underwrites my private health insurance, my thinking was that any liability from accident to treatment would in theory and in practice, I am pleased to say, be seamless.

One or two points:

Good insurance is cheap, always read the small print.

Keep spare car keys separate.

Make sure you have the necessary contact details always to hand.

And most importantly, send someone else to take your baggage to the room, that's what he is there for!

Yours, still aching but improving every day.

John Lamb

## **Winster Local History Group 2007-2008**

This is our programme of talks before Christmas:

**Monday 24 September at 7.30 in the Burton Institute. Rubbish!** An invitation for Winster people to bring along, and for us all to discuss, any items discarded, dumped or dug up. Have you come across anything to do with Winster History? Or maybe it's just a mystery item? Or something you find fascinating? Just bring it along.

To start us off there will be a talk on old bottles by collector Andy Foster, with plenty of examples to be handed round.

Come along and see what turns up.

**Monday 15 October at 8 pm. Party and AGM in the Burton Institute.**

**Monday 26 November at 7.30 in the Burton Institute. A Bloody Business: The Life and Work of a Village Doctor in Times Past,** by Dr Leslie Millard, with examples of old medical implements etc.

Other meetings February to June will be advertised later.

### **Our Other Activities**

We maintain an archive of photographs and documents, and we issue publications (newsletter, book, postcards and prints). Our current active project consists of a field study of the whole parish of Winster.

**Please will you become a member?**

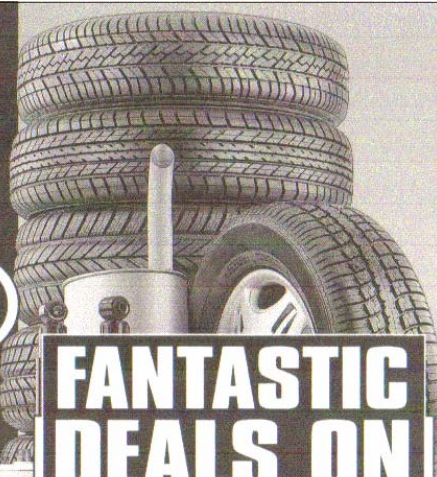
Your annual subscription of £5 (unchanged since our foundation in

SELECTA  TYRE LTD.

# THE BEST PRICES IN TOWN

**GUARANTEED!**

We are a fully independent quality **Fast-Fit** company with twelve highly equipped autoservice centres and we promise to **BEAT** not meet, any local competitor's advertised price or substantiated quote, quality for quality, or brand for brand.



## FANTASTIC DEALS ON

**HIGH PERFORMANCE TYRES**

**MERCEDES 16" TYRES**

from only **£39.95\*** (205/45VR16)

**SUBARU 17" TYRES**

from only **£49.95\*** (215/40ZR17)

**BMW 18" TYRES**

from only **£59.95\*** (225/40ZR18)

**PORSCHE 19" TYRES**

from only **£89.95\*** (235/35ZR19)

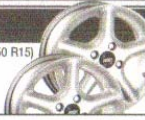
**\*INCLUDING VAT & FITTED FREE!**

<b>2</b> 135 SR13 NEW STEEL RADIAL <b>£30</b> inc vat	<b>2</b> 165/70 TR13 NEW STEEL RADIAL <b>£35</b> inc vat	<b>2</b> 175/65 TR13 NEW STEEL RADIAL <b>£40</b> inc vat	<b>2</b> 185/65 TR15 NEW STEEL RADIAL <b>£45</b> inc vat
---	--	--	--

### ALLOY WHEELS

4x15" alloy wheels fitted with high performance tyres (185/50 R15) including fitting, valves, wheel balancing and VAT

**4 from only £299** were ~~£348~~



### EXHAUSTS MASSIVE SAVINGS

CATALYTIC CONVERTERS STOCKED & FITTED FULL & PART SYSTEMS TO FIT ALL MAKES & MODELS  
Rear Boxes from only **£12.99** Eg. Nissan Micra DN361



### 4x4 TYRES

FROM ONLY **£29.99** INC VAT  
195 R15 (Eg. to fit Suzuki Vitara)



# SELECTA TYRE LTD.

ALL MAJOR CREDIT & DEBIT CARDS ACCEPTED  
OPEN: MONDAY - FRIDAY 8:30-6:00  
SATURDAY 8:30-5:00 \*SUNDAY 10.00-12.30

ALL ADVERTISED PRICES INCLUDE VAT. A SMALL CHARGE FOR TUBELESS VALVES & WHEEL BALANCING WILL BE MADE IF REQUIRED. IF YOUR SIZE OR MAKE IS NOT SHOWN HERE CALL NOW FOR YOUR UNSATISFACTORY SALE PRICE. HURRY, OFFERS ONLY AVAILABLE WHILST STOCK LASTS

**MATLOCK\***  
4 NEW STREET  
FREEPHONE  
0800 977 8174

**BUXTON**  
FAIRFIELD ROAD  
FREEPHONE  
0800 977 8182

Visit us on our website - [www.selectatyre.co.uk](http://www.selectatyre.co.uk)  
**WE NEVER CUT THE QUALITY • WE ONLY CUT THE PRICE**

## Winster School News



We had a busy few weeks leading up to the end of term.

Sharon and her sheep from Greengates in Bonsall visited and we learned what happens to wool from being a fleece to keep the sheep warm to becoming a jumper to keep us warm. We had a go at washing, carding, felting and spinning. The sheep were very friendly. They are Lincolnshire Longwools and are bred specially for their wool which is long and curly.

The Year 5 and Year 6 children went to YHA Ravenstor for two nights with Mrs Shiers, Mrs Tomlinson and Miss Kemble. On Tuesday night we had a storyteller. On Wednesday we went to Burbage Edge and tried weaselling (crawling through small gaps between rocks), abseiling and rock scrambling. It was great fun and everyone helped each other. We were mugged by a hungry sheep at lunchtime! On Thursday we tried archery and other activities at Ravenstor.

Our Leavers' Service in Church was both happy and sad. Our six Year 6 children are off to Highfields in September. Imogene has also left to go to St Anselms and we will miss them all. Six new children will be starting in Reception in September.

Because of the bad weather we weren't able to use the sports field, so we tried a different type of sports day which we really enjoyed.

**PEAK STONESCAPES**  
**DRYSTONE WALLING**  
**NATURAL STONEMWORK & HARD LANDSCAPING**  
**TEL 01629 650418 or 0771 929 1056**  
**FAMILY TRADE FOR OVER 100 YEARS**

There was a man named Simon Berk  
Who stayed in bed and wouldn't work  
His wife, at her its end, said  
I've got to get him out of bed.  
She tried so many different ways  
To get him up and from bed to stay;  
Vacuuming the floor with noisy vigour  
Hoping to rouse the dormant figure,  
Playing rock music loud and long  
Adding her bit with boisterous song,  
Throwing wide the windows on a frosty night  
High powered bulbs in the bedroom light,  
Bounced up and down on the sagging bed,  
Made a hole in the ceiling where she banged her head.  
Laid down beside him to shout in his ear,  
His face so cold, she panicked with fear,  
Calling the under-takers without delay  
Who came, of course, the very same day.  
They looked at the form, so still on the bed  
And to the wife, very quietly said,  
We'll measure him now for the size of his box,  
He's Five Feet two in his pink bed-socks,  
Weighing I think about eight or nine stones,  
We'll colour his cheeks to give him tone.  
Hearing these words Simon leapt up with a yell,  
You're not taking me as down the stairs he fell.  
Rolled down the hall and out the front door  
He's never been seen in bed anymore!

Ron Elliott

### **Secret Gardens**

It looks as though we made £4,000 profit which given the weather on the Sunday, is a fantastic sum. More next month

### **Free to a Good Home**

Two 10m steel measuring tapes and one counter - hardly used. Call 650530.

## Green Corner Jo Ferguson

huge thank you to all of you who completed the energy saving questionnaire - by the time you read this we will be just about to send them off to Buxton for analysis, so if you missed the one enclosed with last month's Village Mag but would still like to complete one, please call Jo on 650530 as we have a few spares and we'll drop one round to you pronto. If you have filled in a questionnaire but not claimed your FREE low energy lightbulb, please phone and we'll get one to you.

Just a reminder that there are two Electrisaves available for loan if you would like to borrow one for a few days to see where your electricity goes. These are domestic electricity monitoring devices that show real-time power consumption: they're a voyage of discovery for both adults and kids and they do have a role to play in helping you make choices about how to spend your money. Call 650530 if you would like to borrow one and John Mills (650549) has kindly offered to help anyone fit it if you're not sure how it works.

Sustainable Winster has its next meeting on 17 September at 8pm at Anthea Rawlence' house, the Old Manse on East Bank. SW wants to be an inclusive group and represent everyone in Winster, so please, if you have views on how we can help you save money and perhaps give the planet a bit of a hand too, do come along. Call 650530 for more info.

Now for the green cleaning tips of the month - and they're tried and tested - to clean windows, mix one flozzie or 28 millies (fluid ounce/millilitres) of vinegar with one pint/half a litre of water, pour into a spray bottle and away you go. For those pongy drains, pour half a cup of baking soda down the drain and add at least a cup of vinegar. Cover the drain and wait a few minutes, then rinse with a mixture of boiling water and salt.

Here is the final word on nutrition and health. It's a relief to know the truth after all those conflicting medical studies:

1. The Japanese eat very little fat and suffer fewer heart attacks than the British or Americans.
2. The French eat a lot of fat and also suffer few heart attacks than the British or Americans.
3. The Japanese drink very little red wine and suffer fewer heart attacks than the British or Americans.
4. The Italians drink excessive amounts of red wine and also suffer few heart attacks than the British or Americans.
5. The Germans drink a lot of beer and eat lots of sausages and fats and suffer fewer heart attacks than the British or Americans.

Rainbows Children's Hospice invite you and 5 colleagues/friends to join us on 9<sup>th</sup> September at Carsington Water in Derbyshire for the Rainbows Raft Race.

The entry fee is £50 plus £200 sponsorship per team. There will be fantastic prizes to be won. All equipment and rafts will be provided.

For more information please contact Emma Hall on 01509 638 006

Rainbows and Bluebell both service this area providing care to life limited children.

## Website Design

- websites
- e-mail
- hosting
- domains
- e-shops



A professional website design and management service for local businesses of all sizes.

For more information call Mat or Niki on 01629 582666

[www.WyeTecWebdesign.co.uk](http://www.WyeTecWebdesign.co.uk)

## GARDENING NOTES

What a wretched summer – nothing but rain forecast! I have found it difficult growing runner beans and most of the pots growing annuals have not fared well. The soft fruit has been fine and also my planting of scented leaved geraniums have looked beautiful due to the variety of leaf type and colour, but not much flowering.

Prune the blackcurrants, redcurrants and white currants this month, and also prune wisteria.

I am a compulsive buyer of shrubs from Woolworths – especially camellias and magnolias. These are repotted very quickly after purchase and will be fit to plant out next month. However these little plants will need some T.L.C. during the winter. I make little cages of wire netting and thread through the holes with bracken and make a lid to fit and place these over the plants in November. After a couple of years they are completely hardy. Keep up the attack on slugs and snails. If lilies have had a bad attack of lily beetle whilst growing in pots, destroy the bulbs. They will only rot.

Cross out all the letters which appear more than ONCE. The remaining letters, when re-arranged, will spell out a word.

Clue: The world would be a dull place without these.

B	A	Z	D	W	Z	J	C	A	Y	T	K	X	N
Q	B	G	A	X	V	H	P	G	I	U	V	C	I
X	I	P	T	U	L	N	K	M	P	Y	Q	H	P
M	J	Z	P	M	I	B	Z	G	A	M	H	U	Z
Q	X	S	V	P	B	Q	D	Q	K	V	M	N	C
H	J	P	U	C	M	C	G	V	J	G	A	D	O
N	T	A	B	T	I	Z	K	Y	B	I	T	B	M
E	C	V	T	K	Z	J	Q	X	D	T	P	H	X
D	N	V	Y	T	H	T	A	C	F	U	G	H	Z
H	I	V	Y	R	D	M	N	G	K	X	I	J	U

Do take care. More next month. Joyce.

For answer see Page 9

**Because of the fantastic response to the setting up of a yoga class it is going to take place**

**BEGINNING WHEN**

**Tuesday 11 September**

**NUMBER OF CLASSES**

**12**

**TIME**

**7.30PM-9.00PM**

**WHERE**

**Burton Institute**

**FOR WHOM**

**Everyone who booked a**

**place**

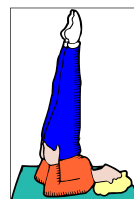
**COST**

**£40**

**Please bring a mat or travel rug. Any problems ring**

**Marg Lester 650090**

**Thanks**



## Church Services

**John Marshall**

Every Sunday Parish Communion at 9.30am

## Winster Methodist Church

26 August	2.30pm	Rev Steven Bennett
9 September	See Noticeboard	
23 September	See Noticeboard	



Methodist Chapel Coffee Evening  
Burton Institute

Friday 31 Aug  
6.30pm  
Cake stall and bric a brac

Many thanks for the article on We Are Survivors. This has been published in the past so forgive me for not including it.

We list local businesses at £20 per year: send details to [mag@winster.org](mailto:mag@winster.org), or drop a note via the Post Office or call 01629 650549

Also, individual adverts with graphics are £5 per month for a 1/5 page. Many thanks

The views expressed in the Winster Village Mag are those of individual contributors

## Winster Business Directory

<b><i>Miner's Standard</i></b>		650279
Real Ale Home cooked Meals	Top of the Bank, Winster	
<b><i>Tulips Florist</i></b>		815816
Flowers for all occasions		
<b><i>Driving Lessons</i></b>	<b><i>01629 650175 or</i></b>	<b>07879</b>
First lesson free	Friendly Female Driving Instructor	268738
<b><i>Matlock Glass Co Ltd</i></b>		582043
Replacement windows & doors, double glazing. Safety glass		
<b><i>Thomas Greatorex &amp; Sons Funeral Directors</i></b>		582470
Established in since 1892 The Green Matlock		
<b><i>Dryad Tree Services</i></b>		650145
Tree Services & Woodland management		
<b><i>Salisbury &amp; Wood</i></b>		582272
Builders Merchants Old Coach Road, Tansley		
<b><i>Bowling Green Inn</i></b>		650219
Good home cooking. East Bank, Winster		
<b><i>L &amp; JM Webster Milk Retailers</i></b>		584797
Delivering your milk, local produce and other products		
<b><i>Peak Cottage Plants</i></b> <a href="mailto:christinelewzey@btinternet.com">christinelewzey@btinternet.com</a>		650428
Hardy perennial plants, design & planting service		
<b><i>Peak Insurance Services Ltd—24 Bakewell Road, Matlock</i></b>		582911
Personal Service for all Business and Home Insurance		
<b><i>M. Markovitz Ltd— Builders &amp; Plumbers merchants</i></b>		753773
Station Road, Darley Dale DE4 2EQ		
<b><i>DJG's Motors Taxi Service Birchover</i></b>	<b><i>650025 or</i></b>	<b>077672</b>
4 + 8 seater Local & Long Distance, Airport etc.		38331

## Winster Business Directory

<b><i>All Sewn Up</i></b>	582421
Curtains, blinds, loose covers, alterations—call J. Noble	
<p>Jean's B &amp; B regrets that she no longer has room for your friends and relatives as she is moving to a smaller house.</p> <p>Thank you for your support over 15 years. We shall miss our visitors but look forward to leading a more leisurely lifestyle!</p>	
<b><i>R Stone Joinery</i></b>	079718
Main Street, Elton. All types of Joinery Work undertaken	15683
<b><i>Leacroft Garage and Car Sales</i></b>	650253
All mechanical and body repairs to any make, MOT	
<b><i>Steve Salfield</i></b> <i>steve@stevesalfield.com</i>	650183
Jazzsax—Jazz Blues, Rock'n'Roll bands for all occasions	
<b><i>BRM Solicitors – Rod Shiers</i></b>	01246
Gray Court, Chesterfield     email:	555111
mail@brmlaw.co.uk	
<b><i>Peak Oil</i></b>	01246
Domestic Heating Oil	450242
<b><i>Designate Products</i></b> <i>www.designateproducts.co.uk</i>	079748
Handmade Creative Interior Accessories	19235

### DIAMOND COURT DENTAL PRACTICE,

WATER STREET, BAKEWELL DE45 1EW

TEL. 01629 812991

Private & NHS Treatments \* Full range of cosmetic treatments

\*Oral Hygienist

Brightsmile and home tooth whitening \* Child Friendly \* Disabled Access

## WINSTER DIRECTORY

Village Mag	Anthea Rawlence	mag@winster.org	650480
Burton Institute: Chair	David Frederickson	davidf@ottopm.co.uk	636586
Burton Institute: Bookings Wheelchair (also Secret Gardens, Christmas Tree)	Gill Geddes	gill@winster.org	650364
Burton Institute: Photocopier/Computer	John Geddes	john@winster.org	650364
Playing Fields/Tennis Court Bookings	Gerry Harpham		650412
Pre-School ("Playgroup")	Cathy Banks		07799 08244
Toddler Group	Irene Webster		650248
Darby & Joan	Sandra Purslow		650222
School: Clerk	Veronica Kemble	info@winster.derbyshire.sch.uk	650238
Village Shop: Manager	Steve Flitter	shop@winster.org	650683
Post Office:	Carolyn Ludlam		650034
Winster Surgery	Leacroft		650207
Carnival: Chair	Mike Hatfield	carnival@winster.org	650468
Parish Council: Clerk	Veronica Kemble	parishclerk@winster.org	650530
Parish Council: Chair, Neighbourhood Watch	Brian Long	parishchair@winster.org	650780
Entertainments Group History Group	Geoff Lester		650090
Tapestry Group: Viewings/Presentations	Wendy Kirton Betty Dawes		650497 650768
District Councillor	John Moseley		650760
Churchwardens	Roland Corfield Roy Witham		734480 650329
Curate	John Marshall		650310